

SHELL ESTIMATE: \$180,000 - \$220,000 *

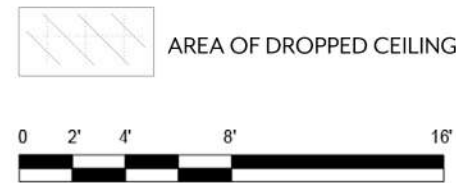
Finished Estimate: \$450,000 - \$540,000 *

**Range depicts starting costs for flat ceiling up to the costs for vaulted ceiling options.
Estimates are not site specific. They do not include shipping, sales tax on materials, or any adjustments for the local costs or the trades in your area. Estimates exclude site work and assume a slab-on-grade foundation and standard Unity Home fixtures & finishes.

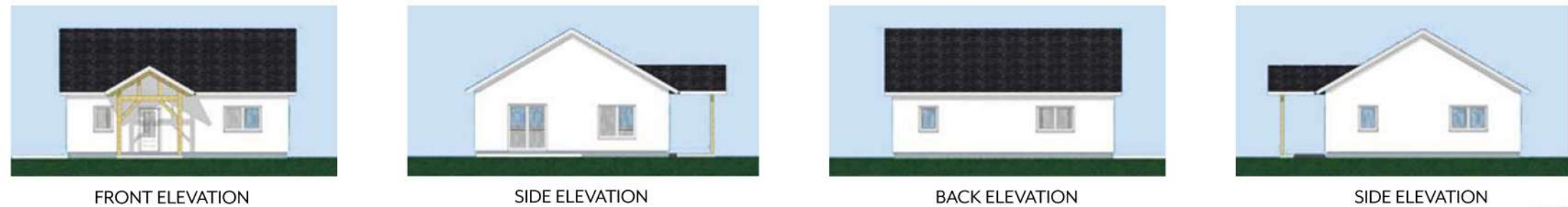
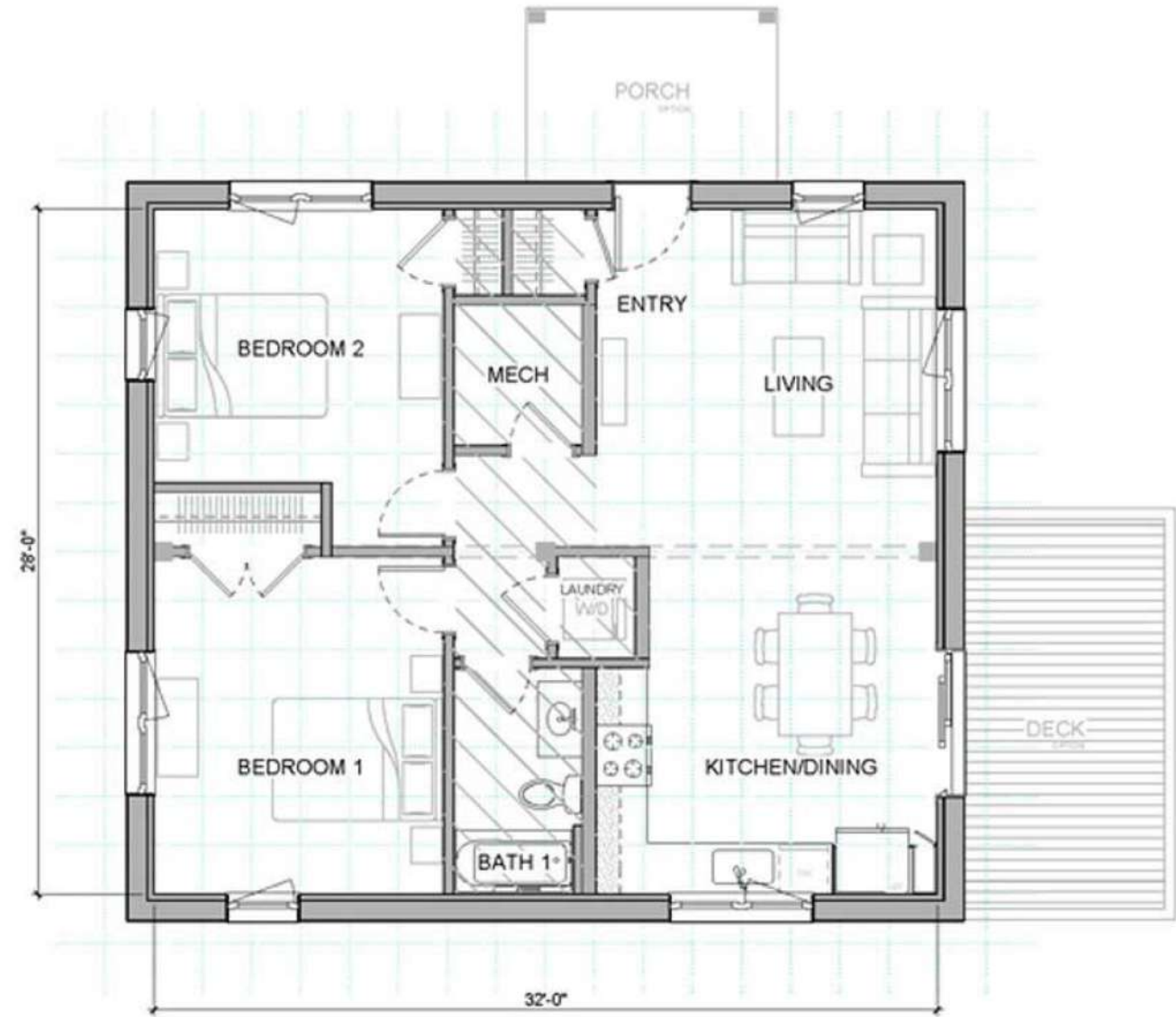
We are providing these numbers for estimating purposes. Please work with your local builder to confirm final estimate.

| | |
|------------------------------------|----------|
| FIRST FLOOR | 1,032 SF |
| TOTAL | 1,032 SF |
| Total SF uses exterior dimensions. | |

- COMPONENTS SHOWN:
- 8 x 10 Covered Porch
 - 8 x 16 Deck



2'-2" GRID



See [UNITYHOMES.COM >>DESIGNS >>XYLA](https://unityhomes.com/designs/xyla) for options, selections and specifications

SHELL ESTIMATE: \$235,000 - 270,000 *

Finished Estimate: \$565,000 - \$655,000 *

** Range depicts starting costs for flat ceiling up to the costs for vaulted ceiling options.* Estimates are not site specific. They do not include shipping, sales tax on materials, or any adjustments for the local costs or the trades in your area. Estimates exclude site work and assume a slab-on-grade foundation and standard Unity Home fixtures & finishes.*

We are providing these numbers for estimating purposes. Please work with your local builder to confirm final estimate.

| | |
|-----------------------------------|----------|
| FIRST FLOOR | 1,250 SF |
| TOTAL | 1,250 SF |
| Total SF uses exterior dimensions | |

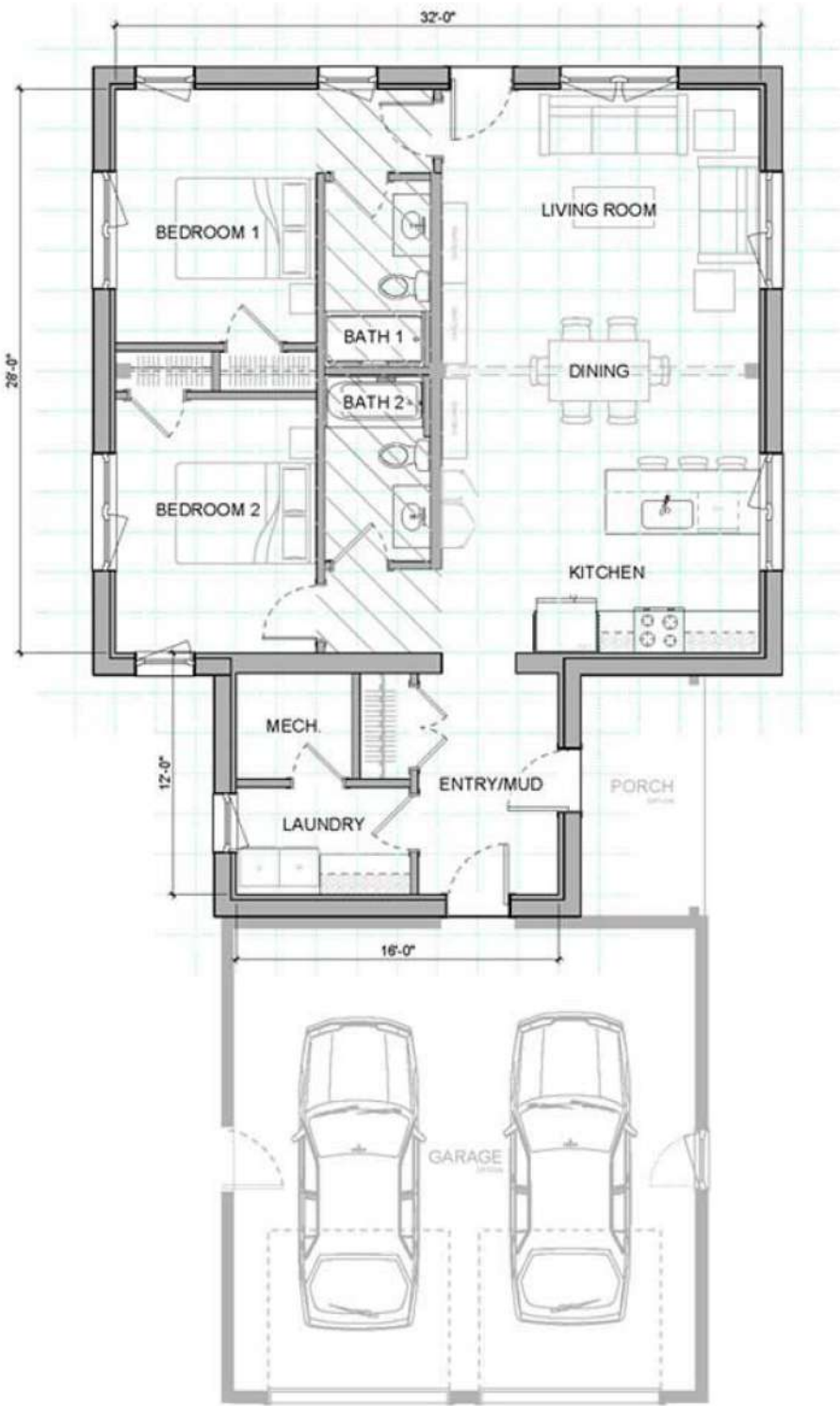
COMPONENTS SHOWN:

- 12 x 16 Connector
- 24 x 24 Garage
- 6 x 12 Covered Porch



2'-0" GRID

See [UNITYHOMES.COM](https://unityhomes.com) >>DESIGNS >> XYLA for options, selections and specifications



FRONT ELEVATION



SIDE ELEVATION



BACK ELEVATION



SIDE ELEVATION

SHELL ESTIMATE: \$265,000 - \$300,000 *

Finished Estimate: \$630,000 - \$715,000*

***Range depicts starting costs for flat ceiling up to the costs for vaulted ceiling options. Estimates are not site specific. They do not include shipping, sales tax on materials, or any adjustments for the local costs or the trades in your area. Estimates exclude site work and assume a slab-on-grade foundation and standard Unity Home fixtures & finishes.*

We are providing these numbers for estimating purposes. Please work with your local builder to confirm final estimate.

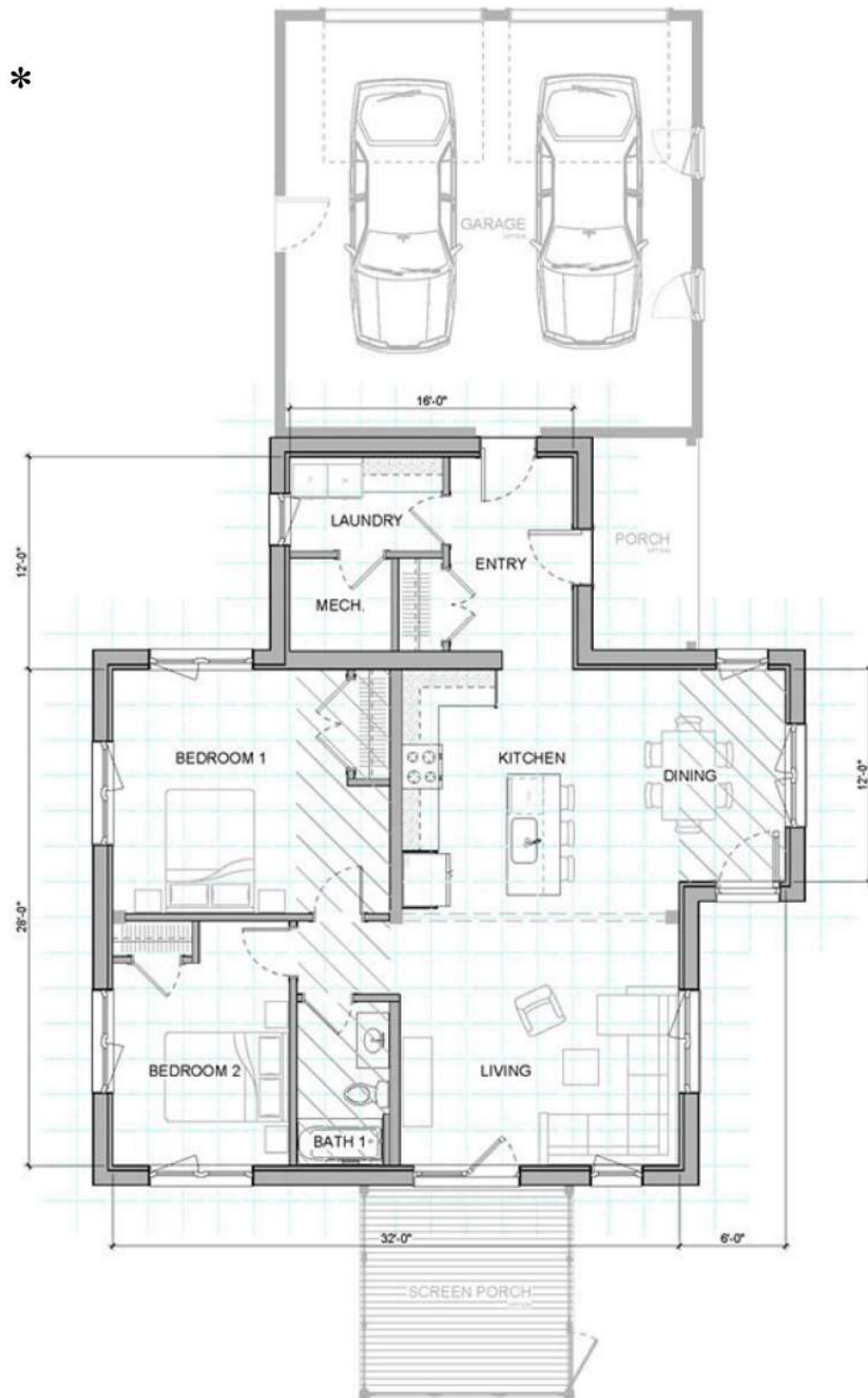
| | |
|------------------------------------|----------|
| FIRST FLOOR | 1,335 SF |
| TOTAL | 1,335 SF |
| Total SF uses exterior dimensions. | |

COMPONENTS SHOWN:

- 6 x 12 Addition
- 12 x 16 Connector
- 24 x 24 Garage
- 6 x 12 Covered Porch
- 12 x 12 Screen Porch



2'-0" GRID



FRONT ELEVATION



SIDE ELEVATION



BACK ELEVATION



SIDE ELEVATION

SHELL ESTIMATE: \$220,000 - \$255,000 *

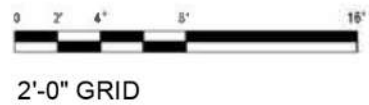
Finished Estimate: \$530,000 - \$620,000 *

**Range depicts starting costs for flat ceiling up to the costs for vaulted ceiling options.
* Estimates are not site specific. They do not include shipping, sales tax on materials, or any adjustments for the local costs or the trades in your area. Estimates exclude site work and assume a slab-on-grade foundation and standard Unity Home fixtures & finishes.*

We are providing these numbers for estimating purposes. Please work with your local builder to confirm final estimate.

| | |
|---|----------|
| FIRST FLOOR | 1,400SF |
| TOTAL | 1,400 SF |
| <small>Total SF uses exterior dimensions.</small> | |

COMPONENTS SHOWN:
14 x 24 Addition
12 x 6 Covered Porch



FRONT ELEVATION



SIDE ELEVATION



BACK ELEVATION



SIDE ELEVATION

SHELL ESTIMATE: \$290,000 - \$325,000*

Finished Estimate: \$690,000 - \$780,000 *

**Range depicts starting costs for flat ceiling up to the costs for vaulted ceiling options
Estimates are not site specific. They do not include shipping, sales tax on materials, or any adjustments for the local costs or the trades in your area. Estimates exclude site work and assume a slab-on-grade foundation and standard Unity Home fixtures & finishes.

We are providing these numbers for estimating purposes. Please work with your local builder to confirm final estimate.

| | |
|------------------------------------|----------|
| FIRST FLOOR | 1,635 SF |
| TOTAL | 1,635 SF |
| Total SF uses exterior dimensions, | |

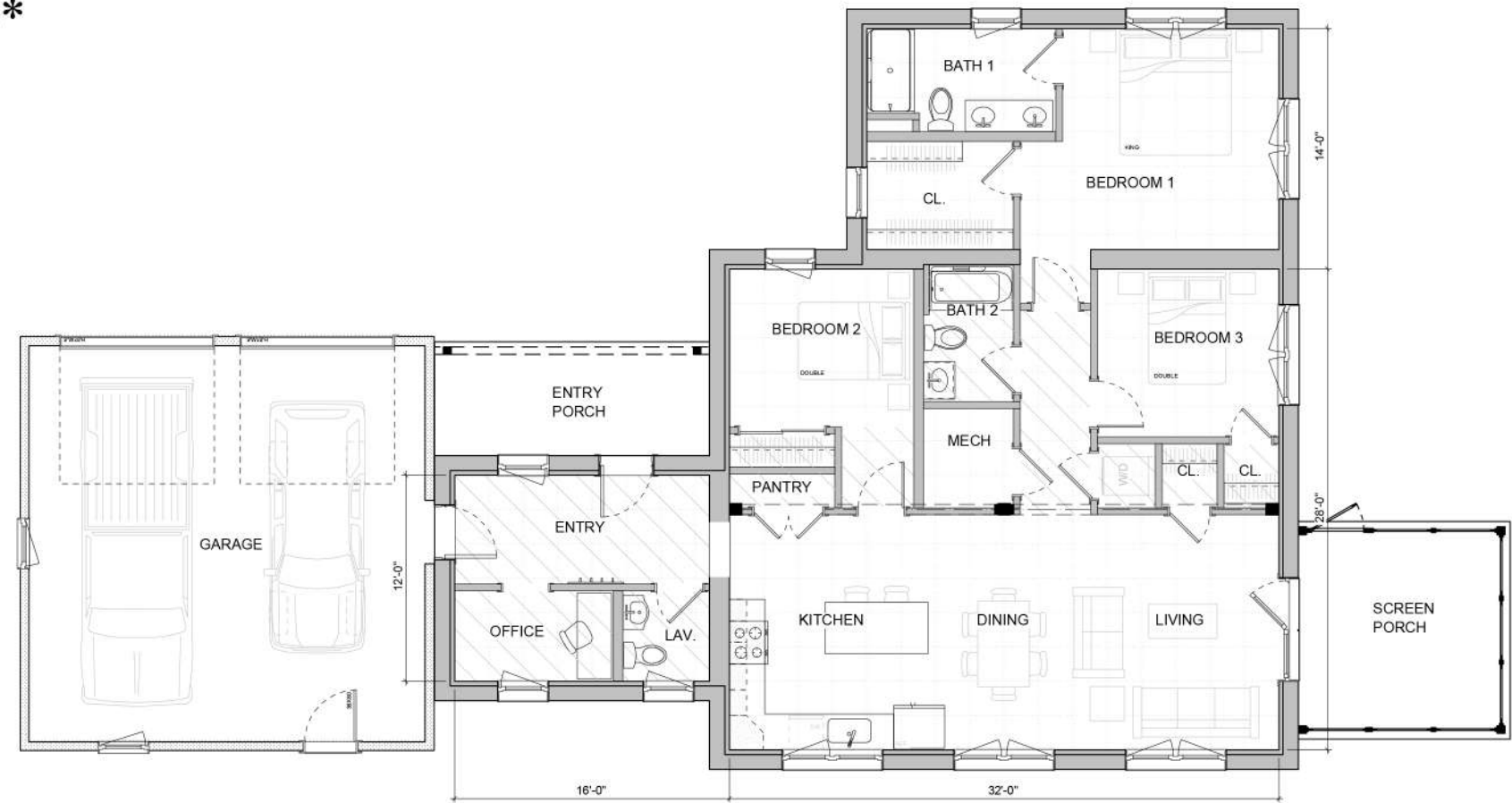
COMPONENTS SHOWN:

- 14 x 24 Addition
- 12 x 16 Connector
- 24 x 24 Garage
- 6 x 16 Covered Porch
- 12 x 12 Screen Porch



2'-0" GRID

See [UNITYHOMES.COM >>DESIGNS >>XYLA](https://unityhomes.com/designs/xyla) for options, selections and specifications



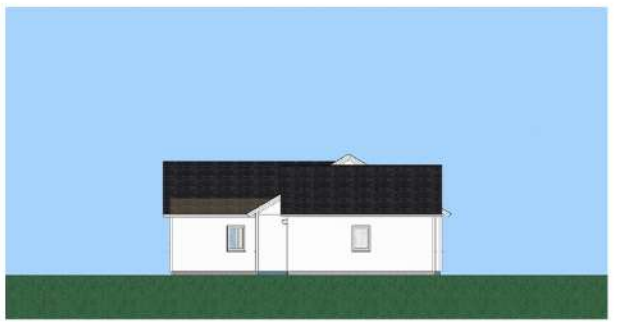
FRONT ELEVATION



SIDE ELEVATION



BACK ELEVATION



SIDE ELEVATION

SHELL ESTIMATE: \$185,000 - \$225,00 *

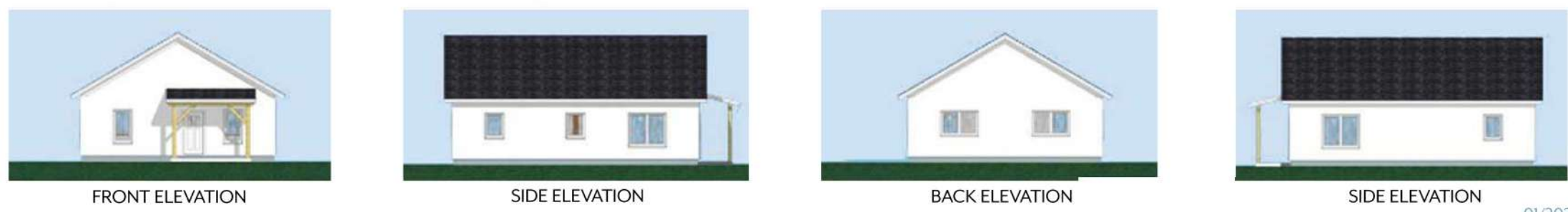
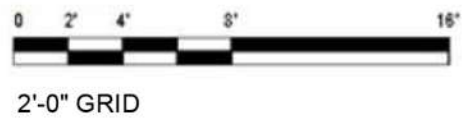
Finished Estimate: \$465,000 - \$560,000 *

*Range depicts starting costs for flat ceiling up to the costs for vaulted ceiling options.
* Estimates are not site specific. They do not include shipping, sales tax on materials, or any adjustments for the local costs or the trades in your area. Estimates exclude site work and assume a slab-on-grade foundation and standard Unity Home fixtures & finishes.

We are providing these numbers for estimating purposes. Please work with your local builder to confirm final estimate.

| | |
|------------------------------------|----------|
| FIRST FLOOR | 1,153 SF |
| TOTAL | 1,153 SF |
| Total SF uses exterior dimensions. | |

COMPONENTS SHOWN:
8 x 12 Covered Porch



See [UNITYHOMES.COM >>DESIGNS >>XYLA](https://unityhomes.com/designs/xyla) for options, selections and specifications

XYLA STREAMLINED E3

SHELL ESTIMATE: \$270,000 - \$310,000 *

Finished Estimate: \$650,000 - \$750,000 *

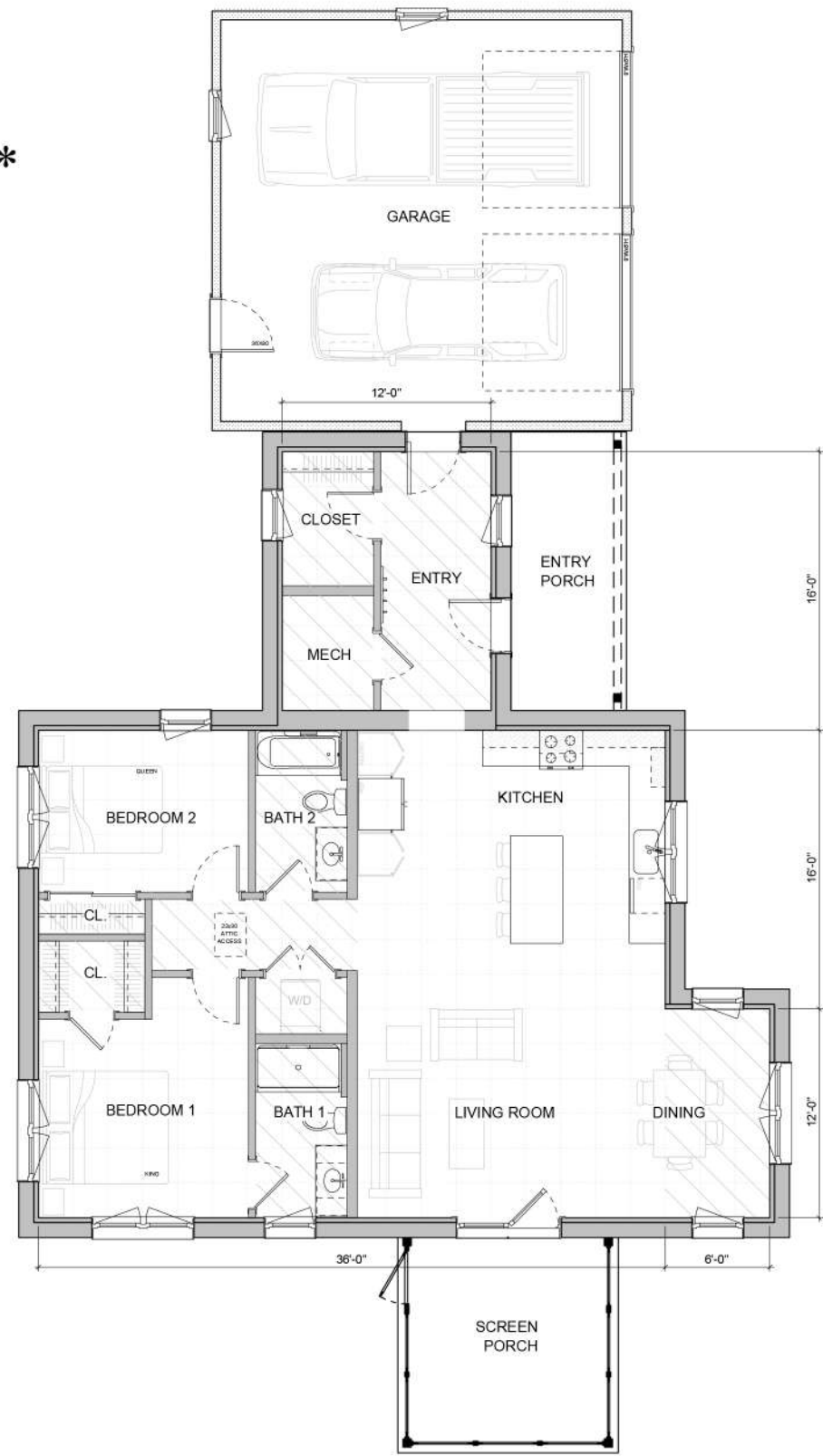
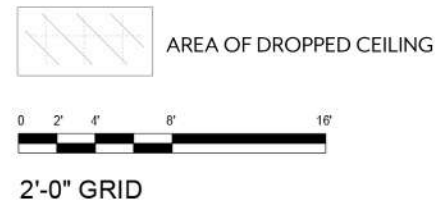
**Range depicts starting costs for flat ceiling up to the costs for vaulted ceiling options.*Estimates are not site specific. They do not include shipping, sales tax on materials, or any adjustments for the local costs or the trades in your area. Estimates exclude site work and assume a slab-on-grade foundation and standard Unity Home fixtures & finishes.*

We are providing these numbers for estimating purposes. Please work with your local builder to confirm final estimate.

| | |
|---|----------|
| FIRST FLOOR | 1,474 SF |
| TOTAL | 1,474 SF |
| <i>Total SF uses exterior dimensions.</i> | |

COMPONENTS SHOWN:

- 6 x 12 Addition
- 12 x 16 Connector
- 24 x 24 Garage
- 6 x 16 Covered Porch
- 12 x 12 Screen Porch



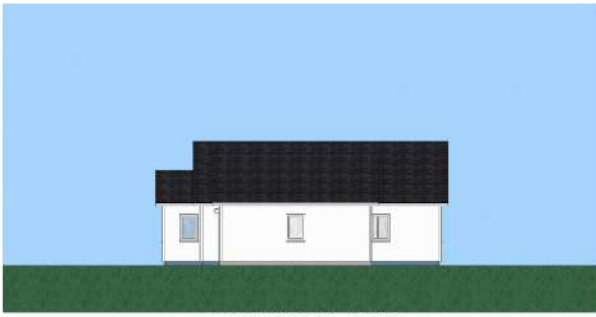
FRONT ELEVATION



SIDE ELEVATION



BACK ELEVATION



SIDE ELEVATION

XYLA STREAMLINED E5

SHELL ESTIMATE: \$280,000 - \$320,000 *

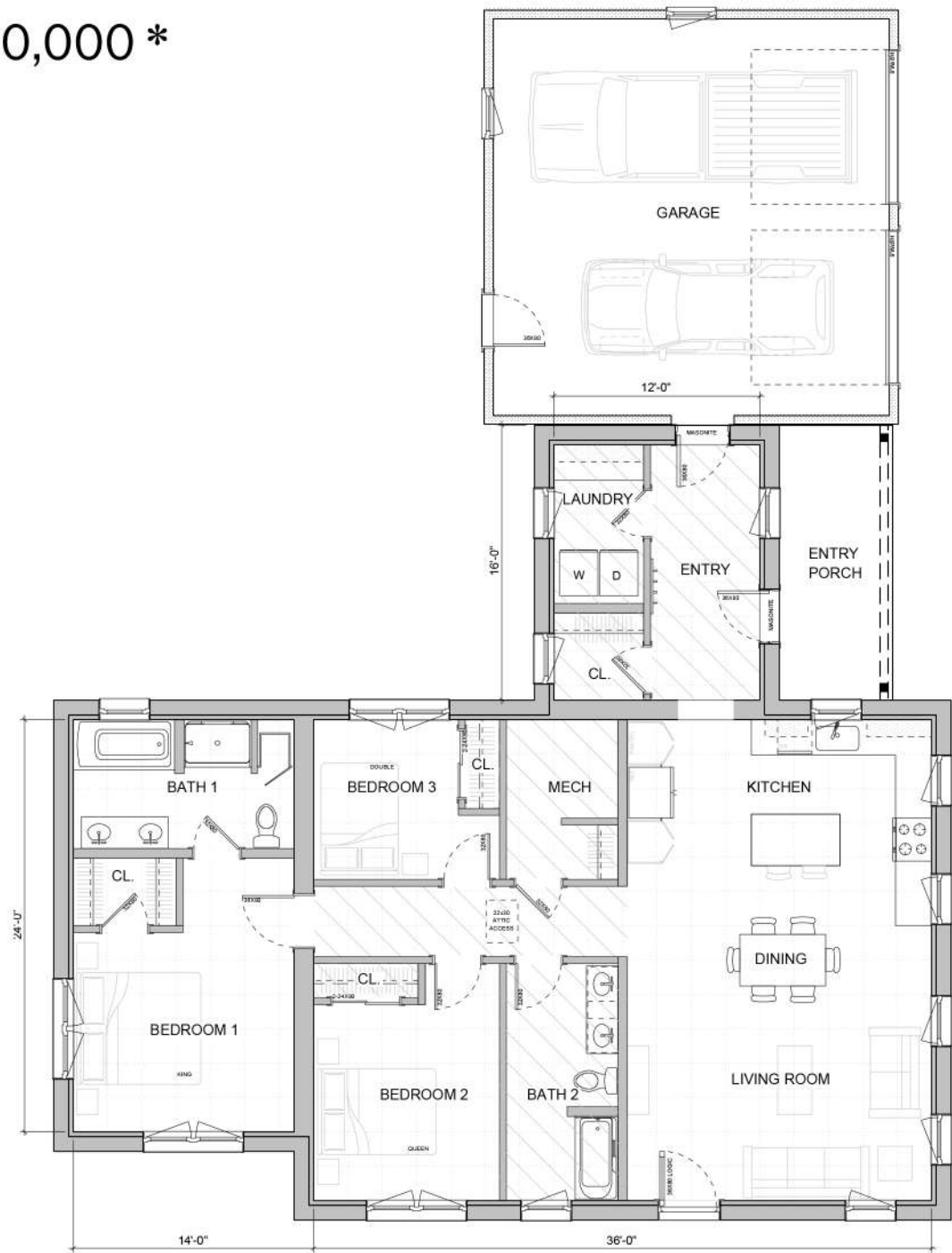
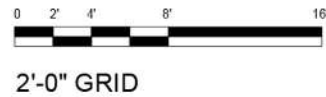
Finished Estimate: \$680,000 - \$780,000*

**Range depicts starting costs for flat ceiling up to the costs for vaulted ceiling options.*Estimates are not site specific. They do not include shipping, sales tax on materials, or any adjustments for the local costs or the trades in your area. Estimates exclude site work and assume a slab-on-grade foundation and standard Unity Home fixtures & finishes.*

We are providing these numbers for estimating purposes. Please work with your local builder to confirm final estimate.

| | |
|------------------------------------|----------|
| FIRST FLOOR | 1,756 SF |
| TOTAL | 1,756 SF |
| Total SF uses exterior dimensions. | |

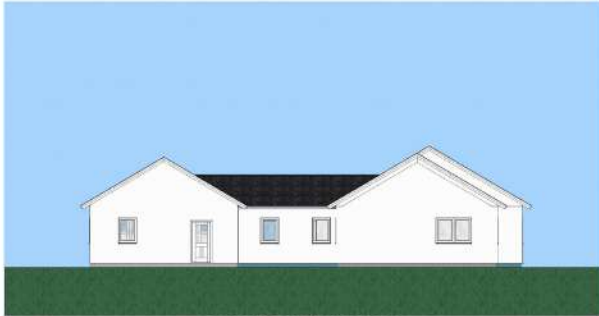
- COMPONENTS SHOWN:
- 14 x 24 Addition
 - 12 x 16 Connector
 - 24 x 24 Garage
 - 6 x 16 Covered Porch



FRONT ELEVATION



SIDE ELEVATION



BACK ELEVATION



SIDE ELEVATION

See [UNITYHOMES.COM >>DESIGNS >>XYLA](https://unityhomes.com/designs/xyla) for options, selections and specifications