

SHELL ESTIMATE: \$280,000 *

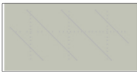
Finished Estimate: \$700,000 *


**Estimates are not site specific. They do not include shipping, sales tax on materials, or any adjustments for the local costs or the trades in your area. Estimates exclude site work and assume a slab-on-grade foundation and standard Unity Home fixtures & finishes.*

We are providing these numbers for estimating purposes. Please work with your local builder to confirm final estimate.

FIRST FLOOR	1,032 SF
SECOND FLOOR	1,032 SF
TOTAL	2,064 SF
<i>Total SF uses exterior dimensions.</i>	

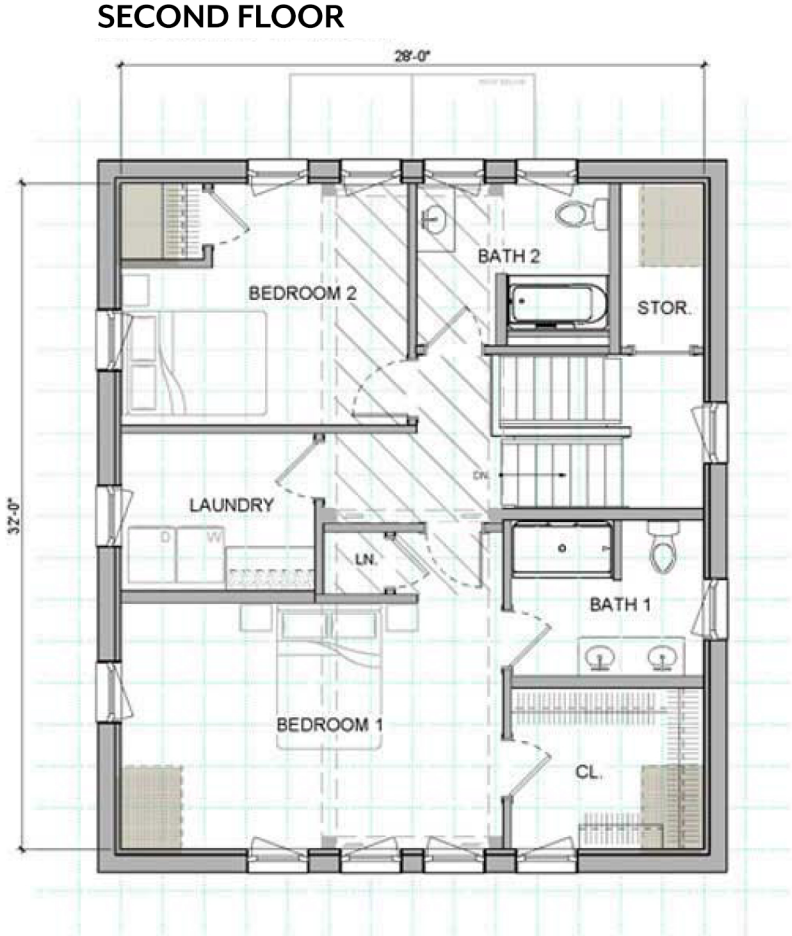
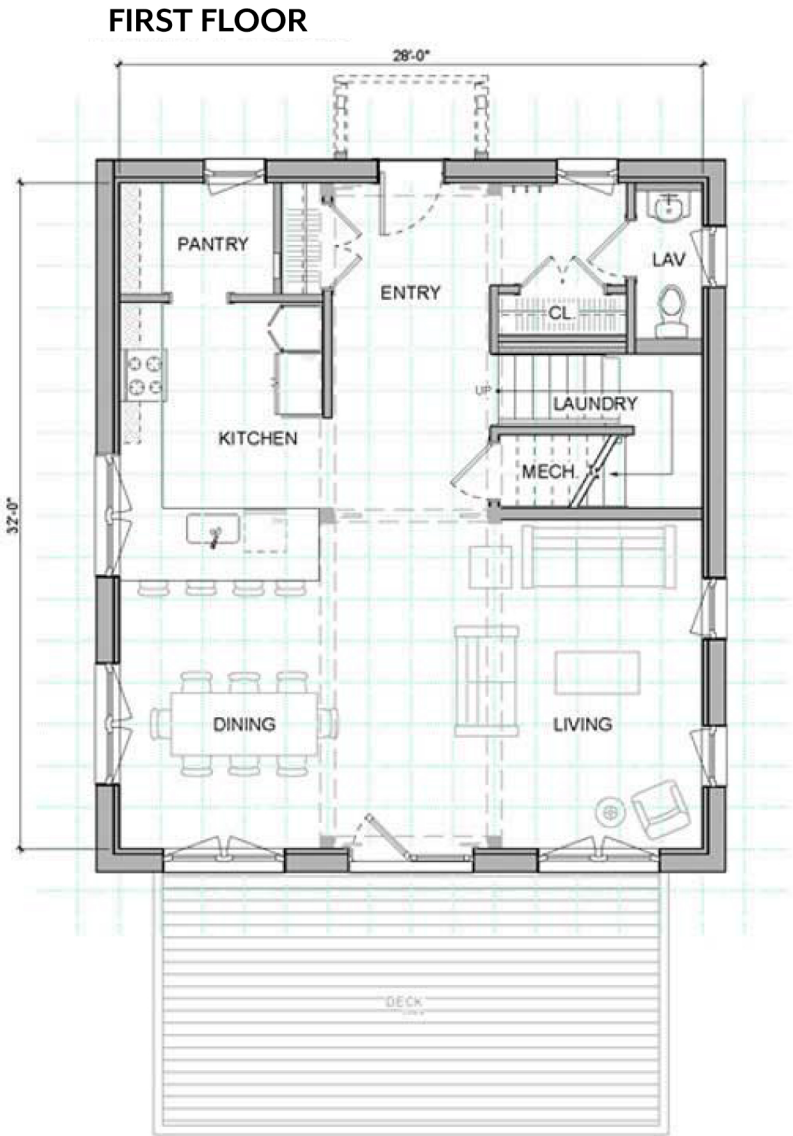
- COMPONENTS SHOWN:
- 4 x 6 Entry Roof
 - 24 x 16 Deck

 AREA WITH LESS THAN 6 FT HEADROOM

 AREA OF DROPPED CEILING



2'-0" GRID



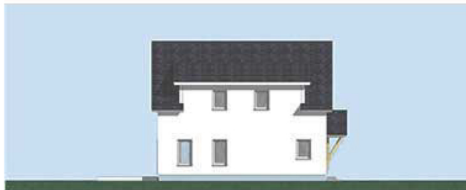
FRONT ELEVATION



SIDE ELEVATION



BACK ELEVATION



SIDE ELEVATION

See [UNITYHOMES.COM](https://unityhomes.com) >>DESIGNS >>TRADD for options, selections and specifications

SHELL ESTIMATE: \$305,000 *

Finished Estimate: \$750,000 *


**Estimates are not site specific. They do not include shipping, sales tax on materials, or any adjustments for the local costs or the trades in your area. Estimates exclude site work and assume a slab-on-grade foundation and standard Unity Home fixtures & finishes.*


We are providing these numbers for estimating purposes. Please work with your local builder to confirm final estimate.

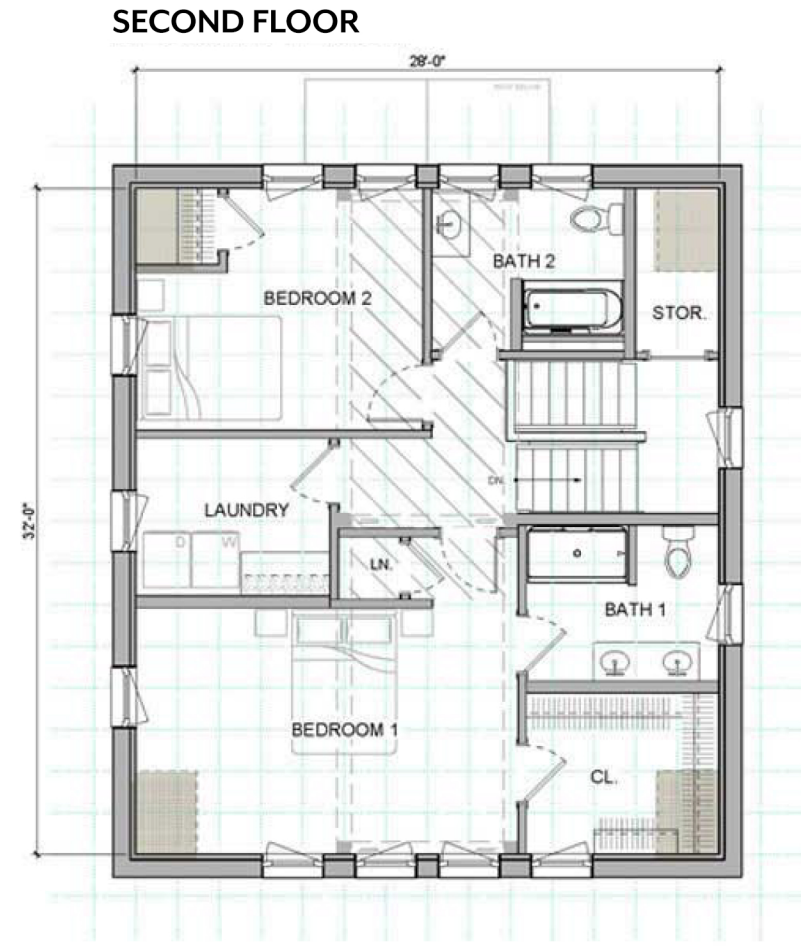
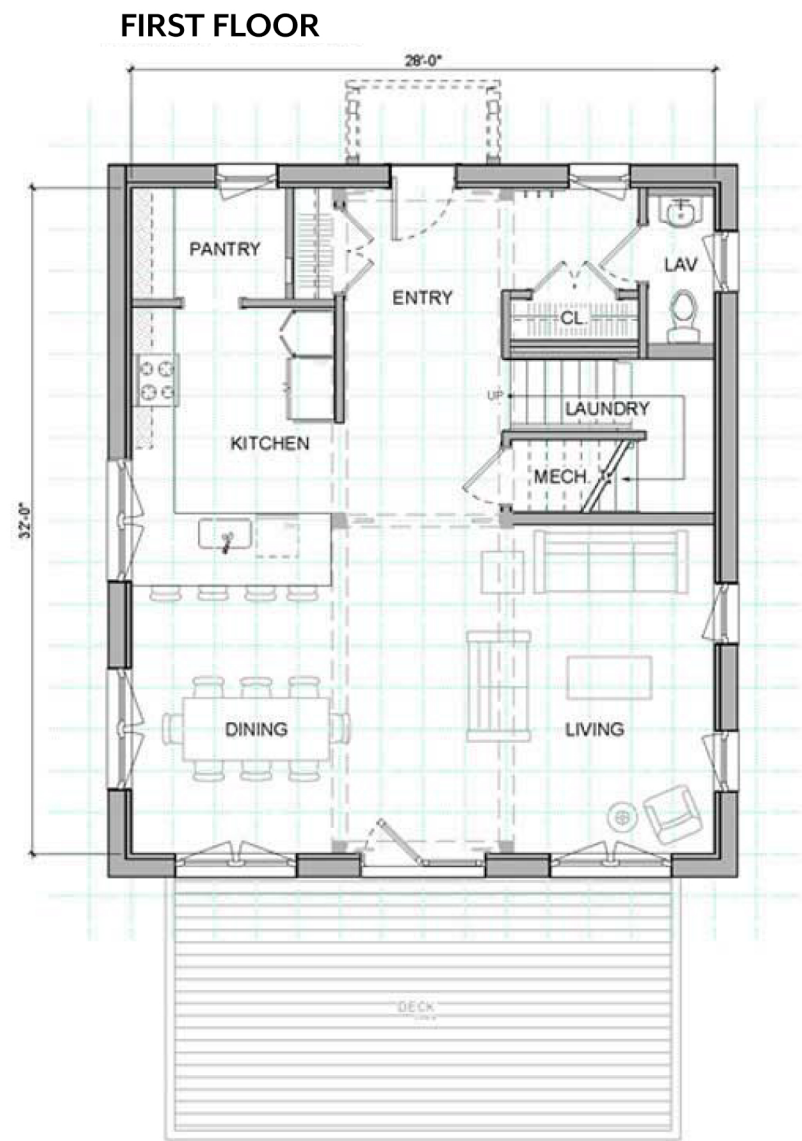
FIRST FLOOR	1,032 SF
SECOND FLOOR	1,032 SF
TOTAL	2,064 SF

Total SF uses exterior dimensions.

- COMPONENTS SHOWN:
- Dormers
 - 4 x 6 Entry Roof
 - 24 x 16 Deck

 AREA WITH LESS THAN 6 FT HEADROOM

 AREA OF DROPPED CEILING



See [UNITYHOMES.COM >>DESIGNS >>TRADD](https://unityhomes.com/designs/tradd) for options, selections and specifications

SHELL ESTIMATE: \$305,000 *

Finished Estimate: \$750,000 *

**Estimates are not site specific. They do not include shipping, sales tax on materials, or any adjustments for the local costs or the trades in your area. Estimates exclude site work and assume a slab-on-grade foundation and standard Unity Home fixtures & finishes.*

We are providing these numbers for estimating purposes. Please work with your local builder to confirm final estimate.

FIRST FLOOR	1,032 SF
SECOND FLOOR	1,032 SF
TOTAL	2,064 SF

Total SF uses exterior dimensions.

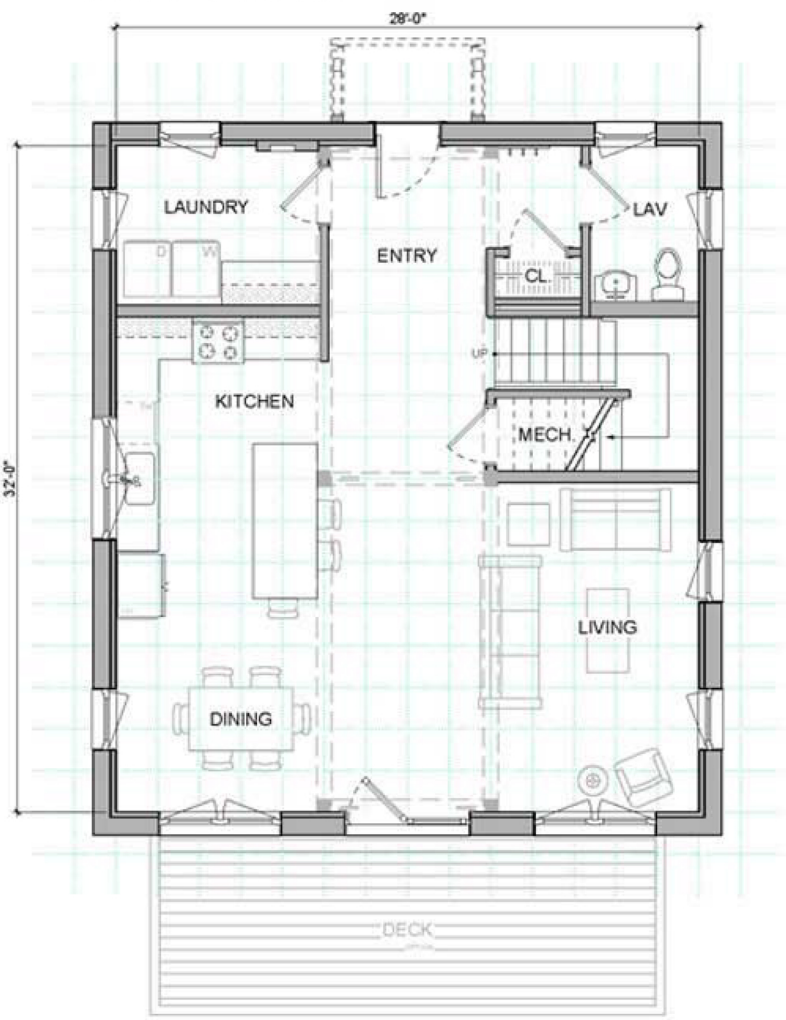
COMPONENTS SHOWN:

- Dormers
- 4 x 6 Entry Roof
- 24 x 16 Deck



2'-0" GRID

FIRST FLOOR



SECOND FLOOR



FRONT ELEVATION



SIDE ELEVATION



BACK ELEVATION



SIDE ELEVATION

SHELL ESTIMATE: \$345,000 *

Finished Estimate: \$830,000 *

**Estimates are not site specific. They do not include shipping, sales tax on materials, or any adjustments for the local costs or the trades in your area. Estimates exclude site work and assume a slab-on-grade foundation and standard Unity Home fixtures & finishes.*

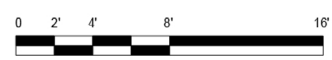
We are providing these numbers for estimating purposes only. Please work with your local builder to confirm final estimates.

FIRST FLOOR	1,032 SF
SECOND FLOOR	1,032 SF
TOTAL	2,064 SF

Total SF uses exterior dimensions.

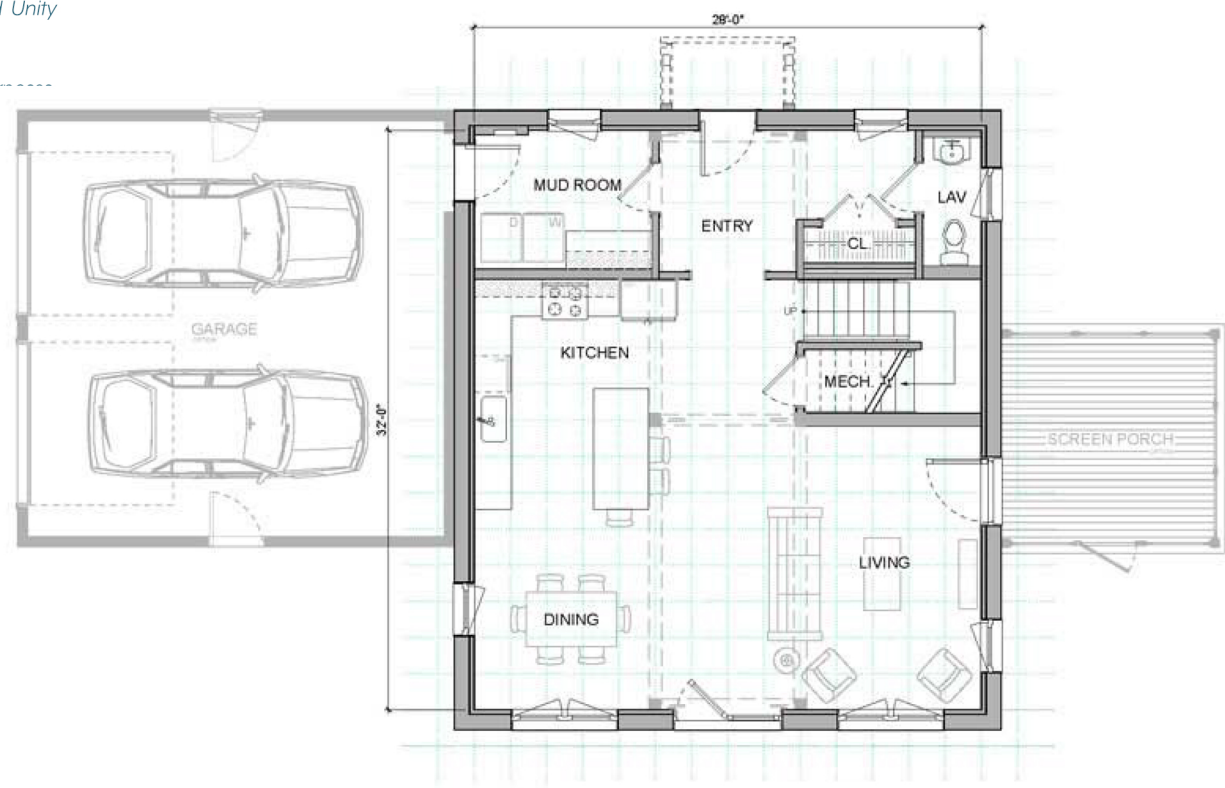
COMPONENTS SHOWN:

- Dormers
- 24 x 24 Garage
- 4 x 6 Entry Roof
- 12 x 12 Screen Porch

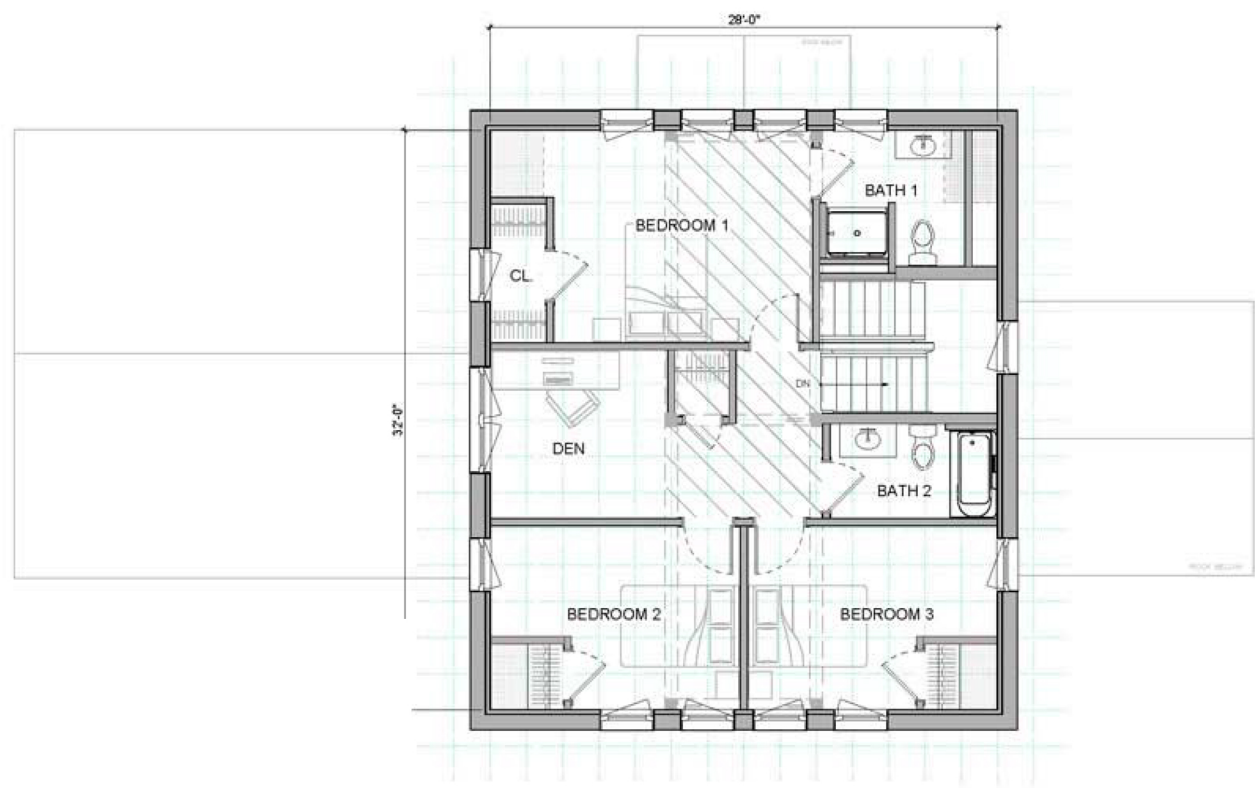


2'-0" GRID

FIRST FLOOR



SECOND FLOOR



FRONT ELEVATION



SIDE ELEVATION



BACK ELEVATION



SIDE ELEVATION

See [UNITYHOMES.COM](https://unityhomes.com) >>DESIGNS >>TRADD for options, selections and specifications

SHELL ESTIMATE: \$350,000 *

Finished Estimate: \$860,000 *

**Estimates are not site specific. They do not include shipping, sales tax on materials, or any adjustments for the local costs or the trades in your area. Estimates exclude site work and assume a slab-on-grade foundation and standard Unity Home fixtures & finishes.*


We are providing these numbers for estimating purposes. Please work with your local builder to confirm final estimate.


FIRST FLOOR	1,400 SF
SECOND FLOOR	1,032 SF
TOTAL	2,432 SF

Total SF uses exterior dimensions.

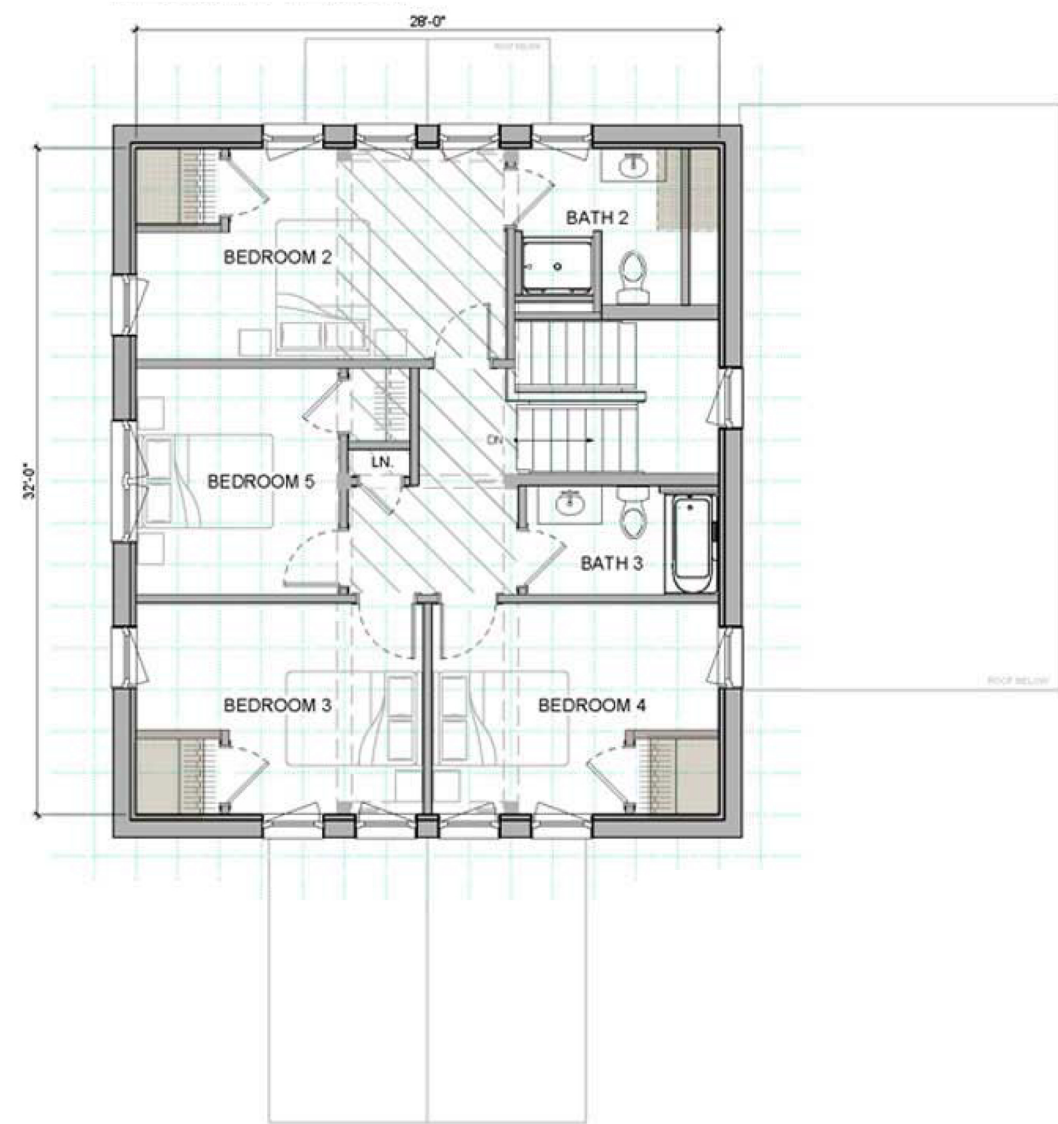
COMPONENTS SHOWN:

- Dormers
- 14 x 24 Addition
- 4 x 6 Entry Roof
- 12 x 12 Screen Porch

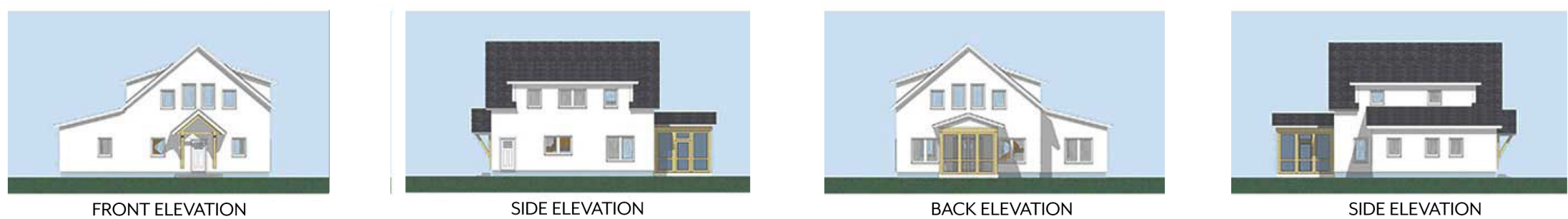
 AREA OF DROPPED CEILING


0 2' 4' 8' 16'

2'-0" GRID



See [UNITYHOMES.COM](https://unityhomes.com) >>DESIGNS >>TRADD for options, selections and specifications



SHELL ESTIMATE: \$365,000 *

Finished Estimate: \$890,000 *

**Estimates are not site specific. They do not include shipping, sales tax on materials, or any adjustments for the local costs or the trades in your area. Estimates exclude site work and assume a slab-on-grade foundation and standard Unity Home fixtures & finishes.*


We are providing these numbers for estimating purposes. Please work with your local builder to confirm final estimate.


FIRST FLOOR	1,511 SF
SECOND FLOOR	1,032 SF
TOTAL	2,543 SF

Total SF uses exterior dimensions.

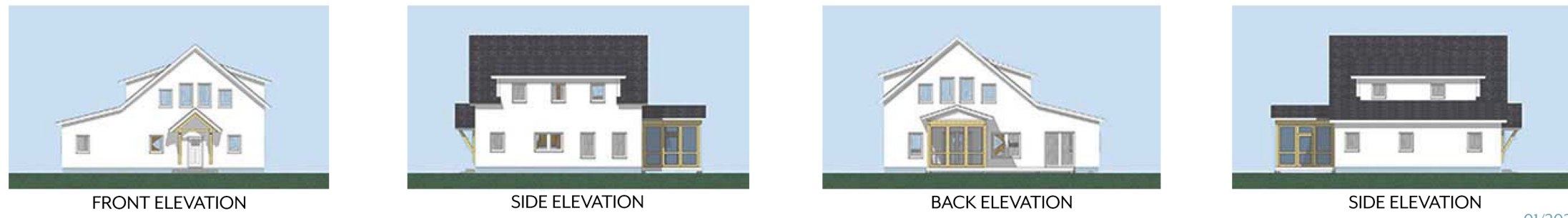
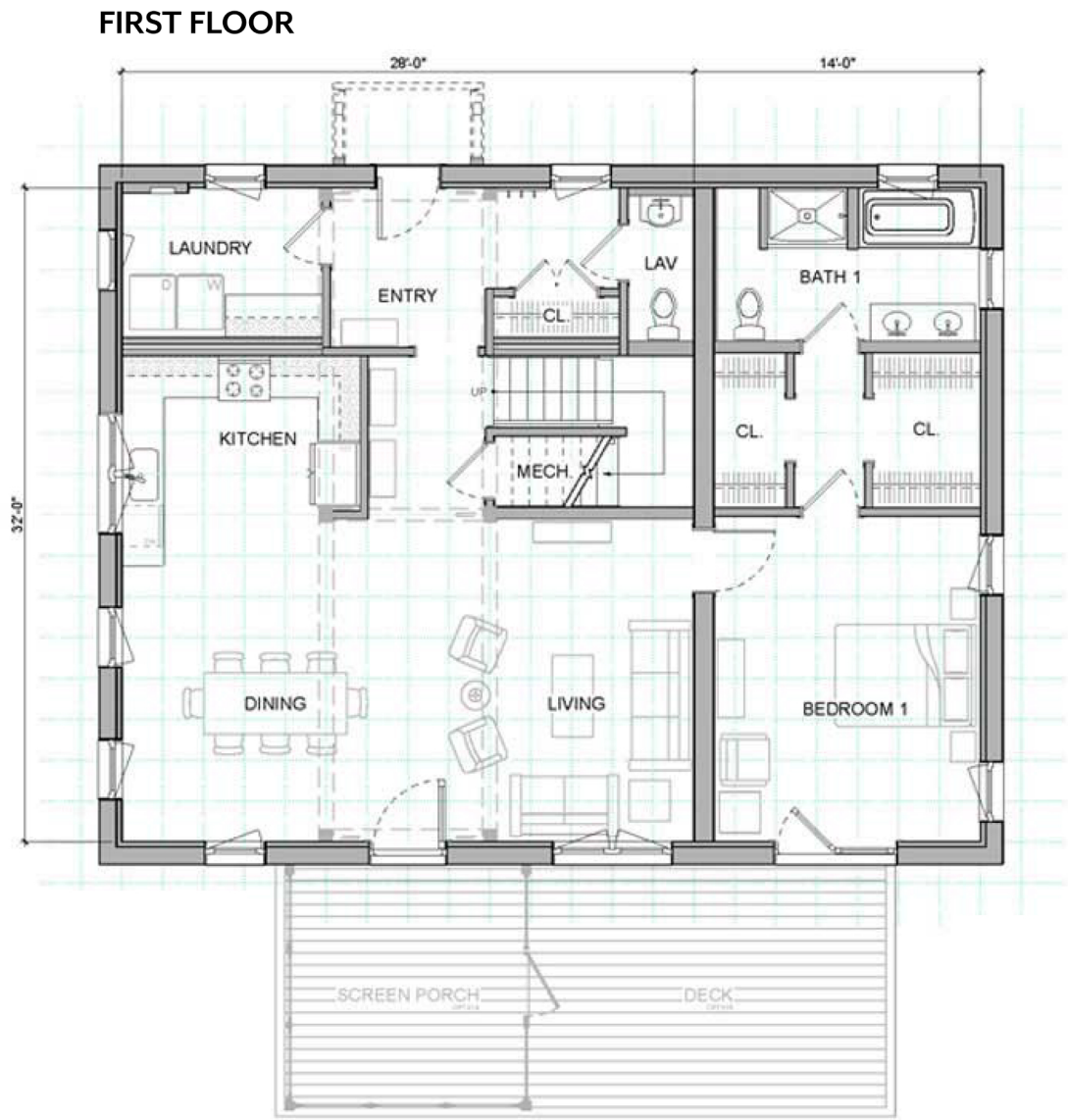
COMPONENTS SHOWN:

- Dormers
- 14 x 32 Addition
- 4 x 6 Entry Porch
- 12 x 12 Screen Porch
- 12 x 18 Deck

 AREA OF DROPPED CEILING



2'-0" GRID



SHELL ESTIMATE: \$365,000 *

Finished Estimate: \$890,000 *

**Estimates are not site specific. They do not include shipping, sales tax on materials, or any adjustments for the local costs or the trades in your area. Estimates exclude site work and assume a slab-on-grade foundation and standard Unity Home fixtures & finishes.*


We are providing these numbers for estimating purposes. Please work with your local builder to confirm final estimate.


FIRST FLOOR	1,511 SF
SECOND FLOOR	1,032 SF
TOTAL	2,543 SF

Total SF uses exterior dimensions.

COMPONENTS SHOWN:

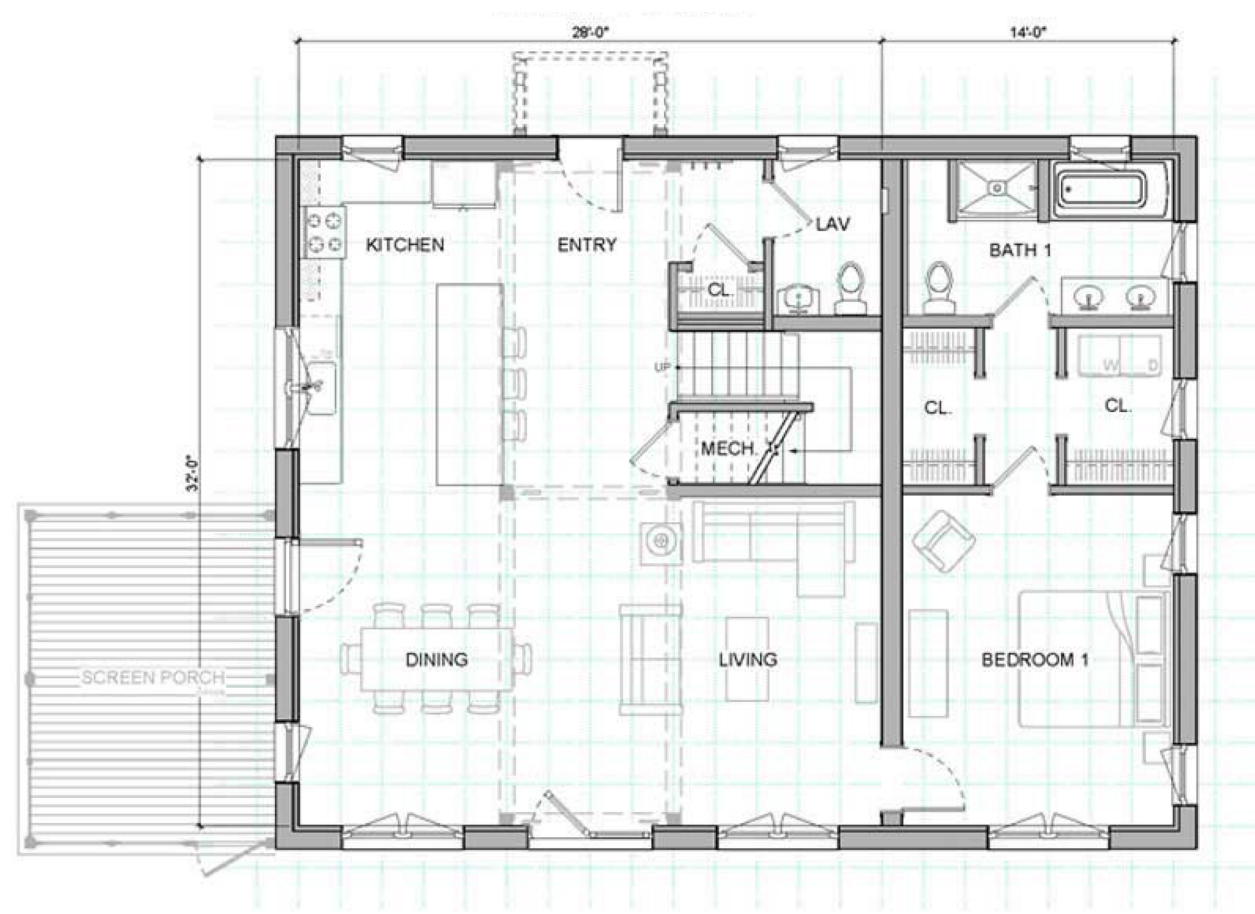
- Dormers
- 14 x 32 Addition
- 4 x 5 Entry Roof
- 12 x 16 Screen Porch

 AREA OF DROPPED CEILING

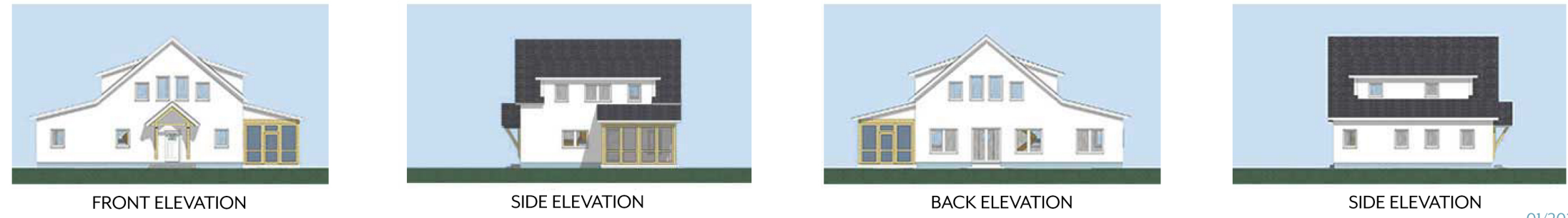


2'-0" GRID

FIRST FLOOR



SECOND FLOOR



SHELL ESTIMATE: \$425,000 *

Finished Estimate: \$1,025,000 *

**Estimates are not site specific. They do not include shipping, sales tax on materials, or any adjustments for the local costs or the trades in your area. Estimates exclude site work and assume a slab-on-grade foundation and standard Unity Home fixtures & finishes.*

We are providing these numbers for estimating purposes. Please work with your local builder to confirm final estimate.

FIRST FLOOR	1,738 SF
SECOND FLOOR	1,032 SF
TOTAL	2,770 SF

Total SF uses exterior dimensions.

COMPONENTS SHOWN:

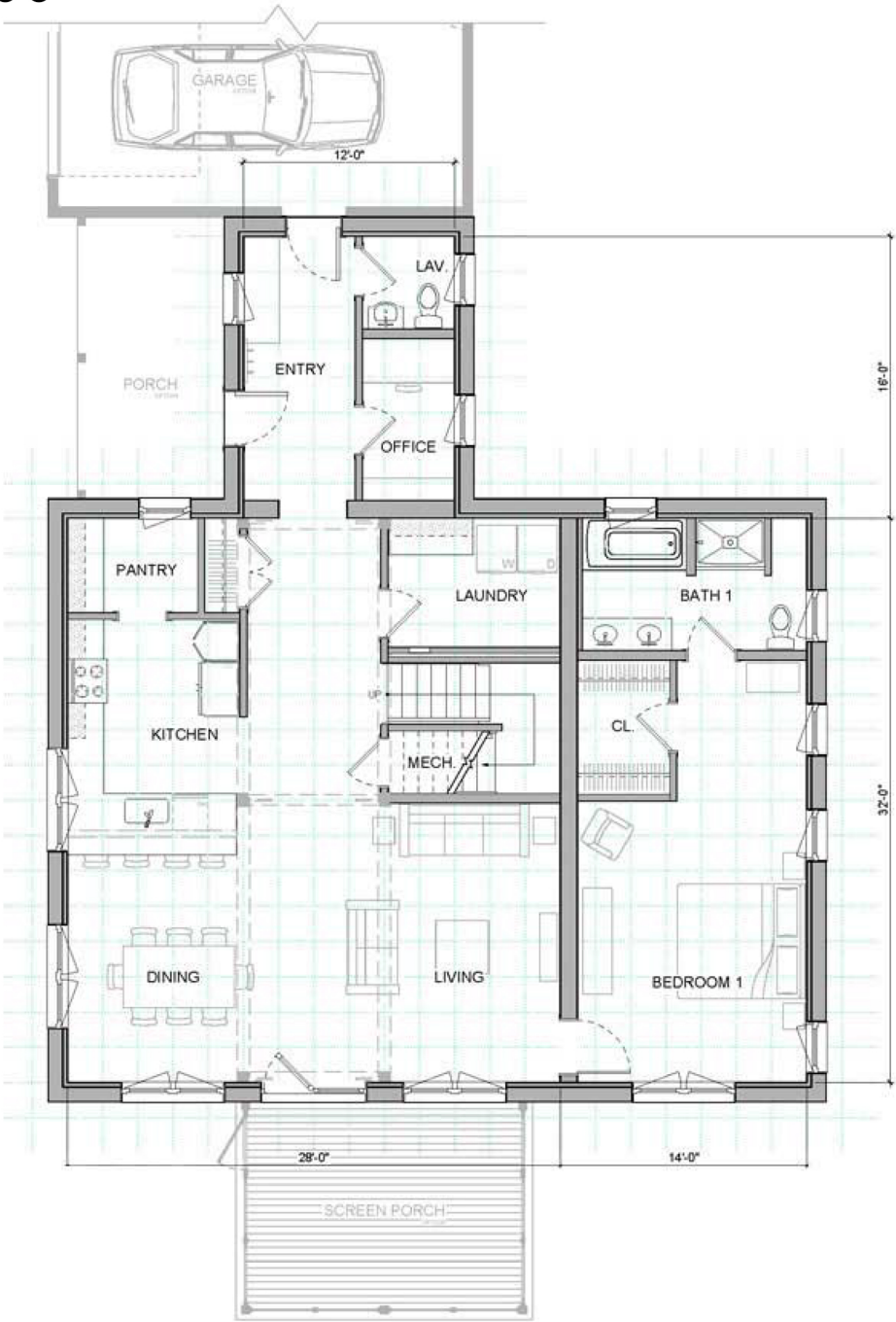
- Dormers
- 14 x 32 Addition
- 12 x 16 Connector
- 24 x 24 Garage
- 6 x 16 Covered Porch
- 12 x 12 Screen Porch

AREA OF DROPPED CEILING

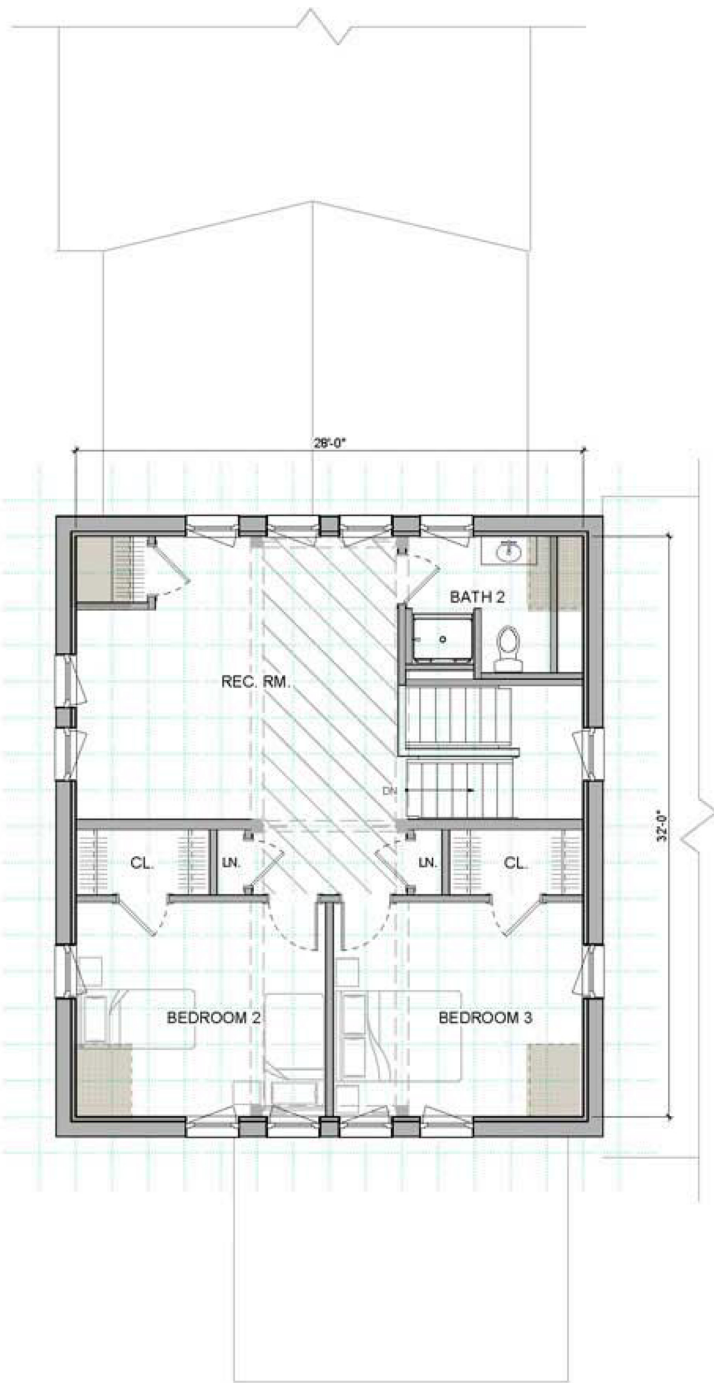


2'-0" GRID

FIRST FLOOR



SECOND FLOOR



FRONT ELEVATION



SIDE ELEVATION



BACK ELEVATION



SIDE ELEVATION

See [UNITYHOMES.COM](https://unityhomes.com) >>DESIGNS >>TRADD for options, selections and specifications

TRADD STREAMLINED E6

SHELL ESTIMATE: \$410,000 *

Finished Estimate: \$985,000 *

**Estimates are not site specific. They do not include shipping, sales tax on materials, or any adjustments for the local costs or the trades in your area. Estimates exclude site work and assume a slab-on-grade foundation and standard Unity Home fixtures & finishes.*

We are providing these numbers for estimating purposes. Please work with your local builder to confirm final estimate.

FIRST FLOOR	1,635 SF
SECOND FLOOR	1,038 SF
TOTAL	2,673 SF

Total SF uses exterior dimensions.

COMPONENTS SHOWN:

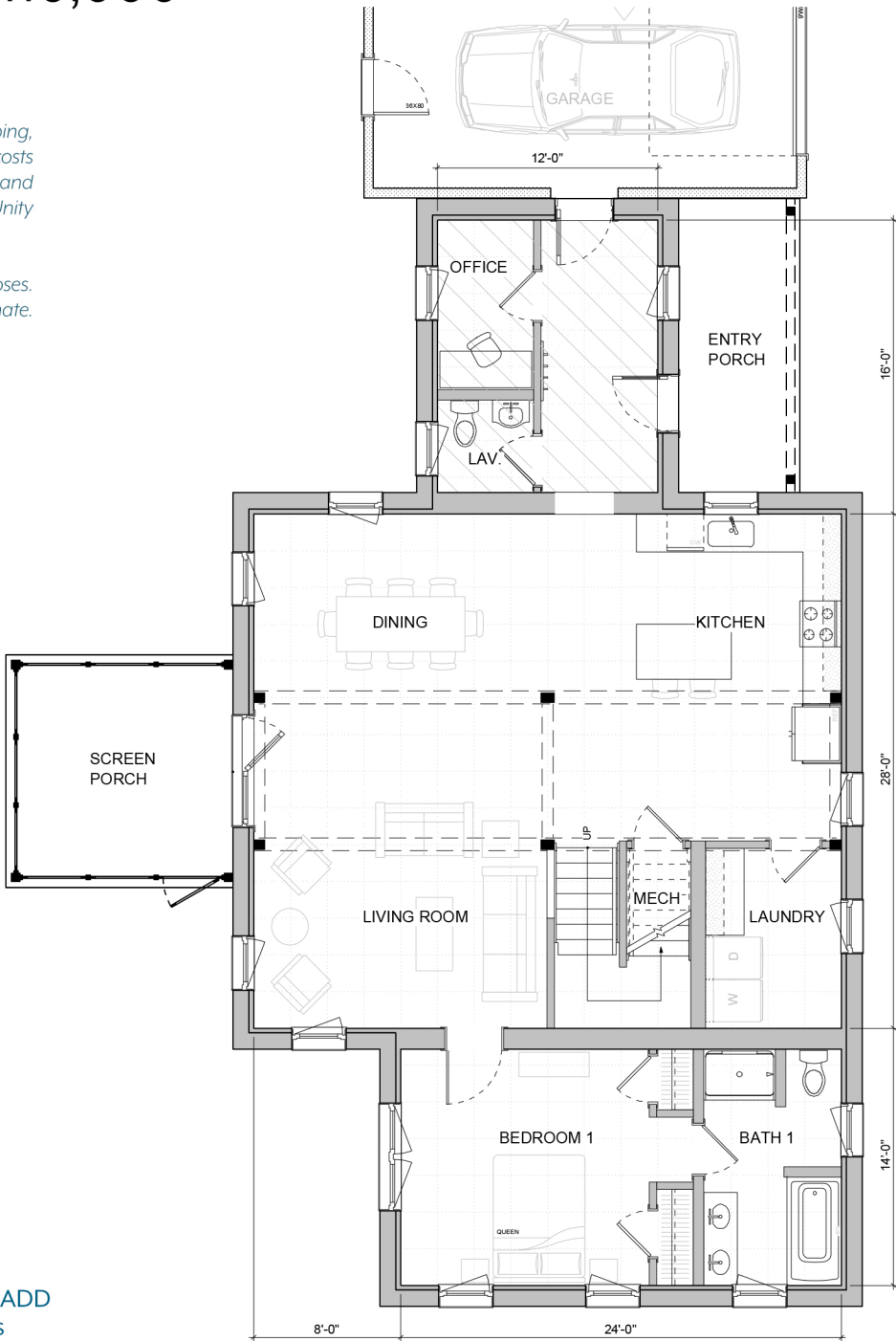
- Dormers
- 14 x 24 Addition
- 12 x 16 Connector
- 12 x 24 Garage
- 6 x 16 Covered Porch
- 12 x 12 Screen Porch



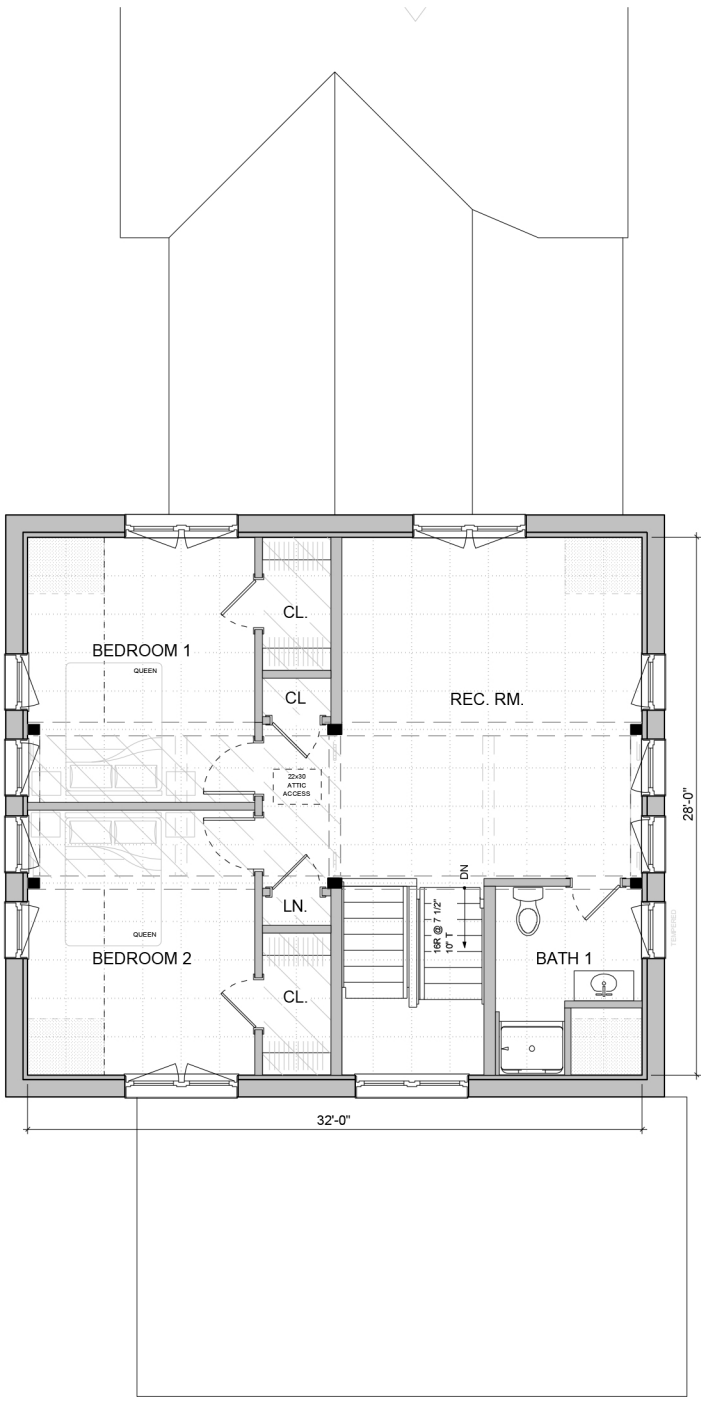
2'-0" GRID

See [UNITYHOMES.COM](https://unityhomes.com) >>DESIGNS >>TRADD for options, selections and specifications

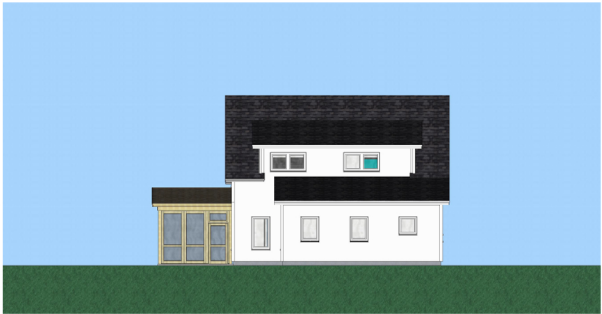
FIRST FLOOR



SECOND FLOOR



FRONT ELEVATION



SIDE ELEVATION



BACK ELEVATION



SIDE ELEVATION

TRADD STREAMLINED G1

SHELL ESTIMATE: \$310,000 *

Finished Estimate: \$770,000 *

**Estimates are not site specific. They do not include shipping, sales tax on materials, or any adjustments for the local costs or the trades in your area. Estimates exclude site work and assume a slab-on-grade foundation and standard Unity Home fixtures & finishes.*

We are providing these numbers for estimating purposes. Please work with your local builder to confirm final estimate.

FIRST FLOOR	1,038 SF
SECOND FLOOR	1,038 SF
TOTAL	2,076 SF

Total SF uses exterior dimensions.

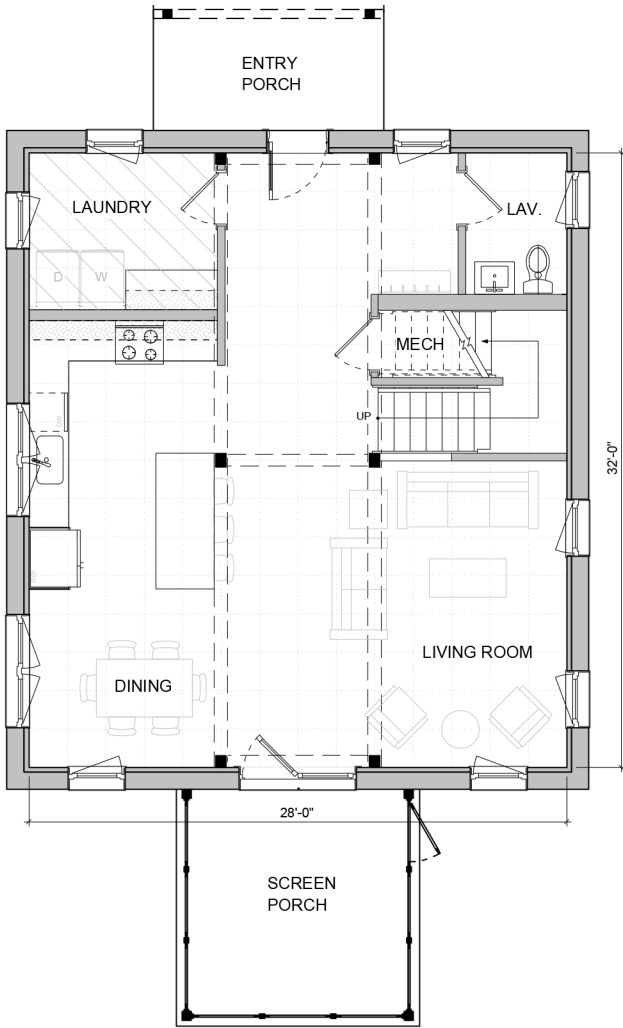
COMPONENTS SHOWN:

- Dormers
- 6 x 8 Entry Roof
- 12 x 12 Screen Porch

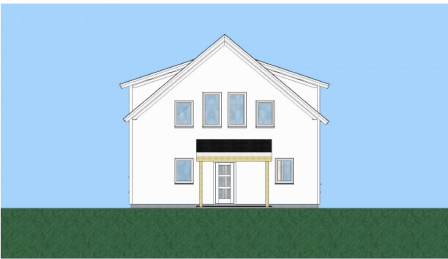
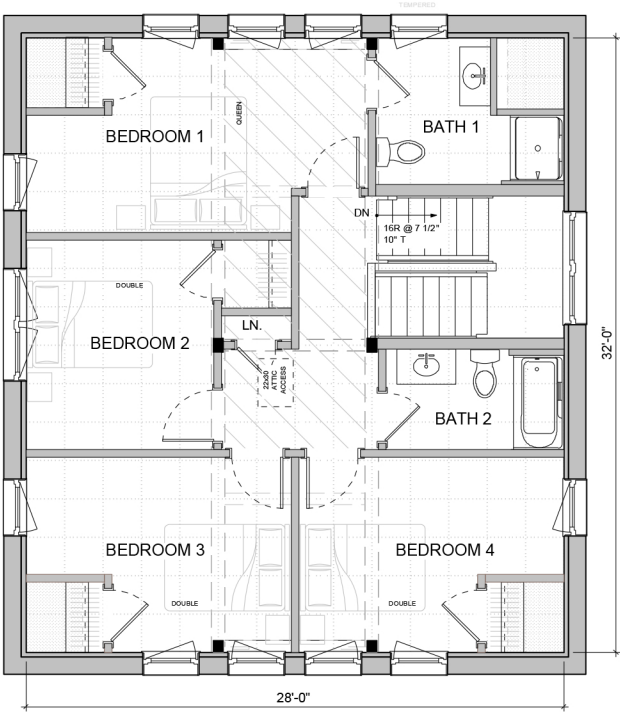


2'-0" GRID

FIRST FLOOR



SECOND FLOOR



FRONT ELEVATION



SIDE ELEVATION



BACK ELEVATION



SIDE ELEVATION

See [UNITYHOMES.COM](https://unityhomes.com) >>DESIGNS >>TRADD for options, selections and specifications

TRADD STREAMLINED E8

SHELL ESTIMATE: \$405,000 *

Finished Estimate: \$975,000 *

**Estimates are not site specific. They do not include shipping, sales tax on materials, or any adjustments for the local costs or the trades in your area. Estimates exclude site work and assume a slab-on-grade foundation and standard Unity Home fixtures & finishes.*

We are providing these numbers for estimating purposes. Please work with your local builder to confirm final estimate.

FIRST FLOOR	1,747 SF
SECOND FLOOR	1,038 SF
TOTAL	2,785 SF

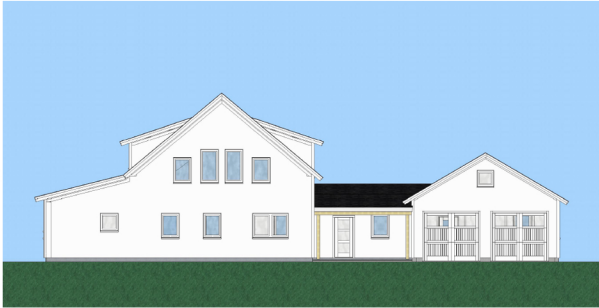
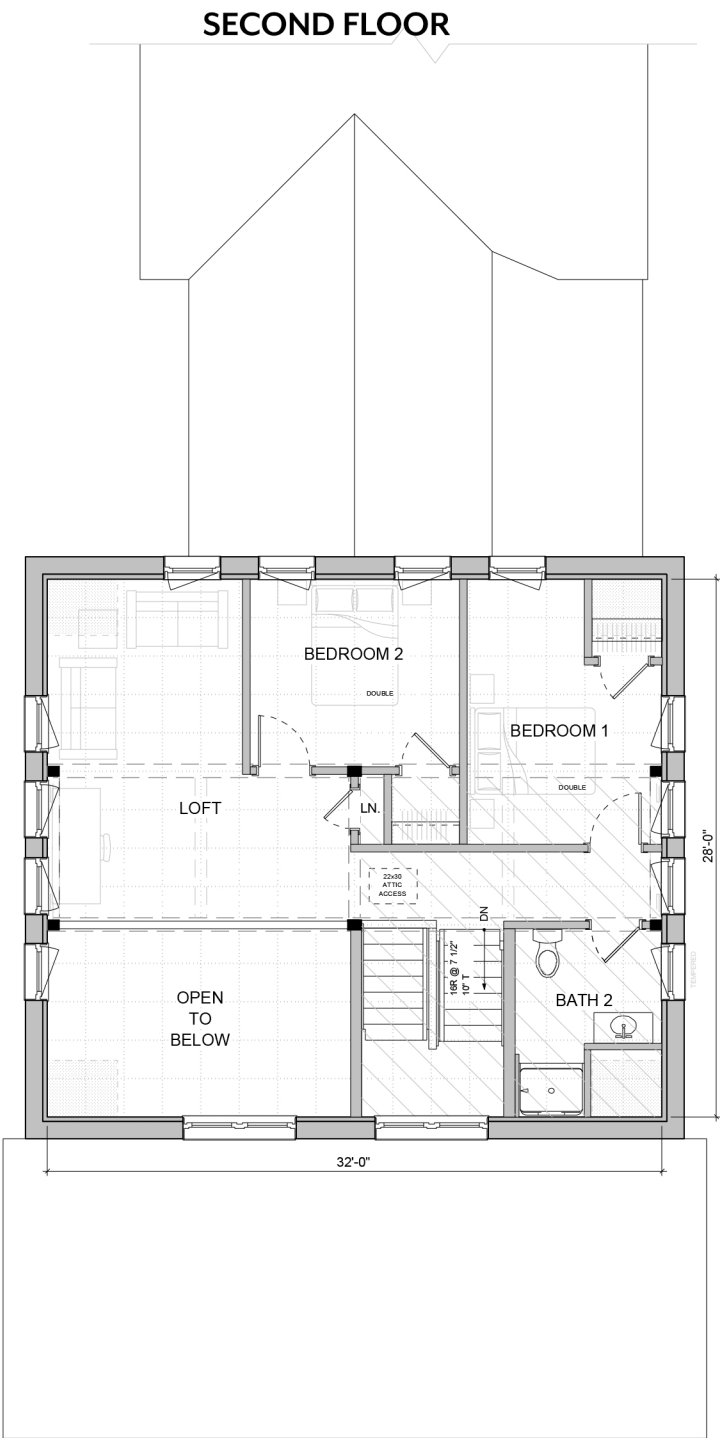
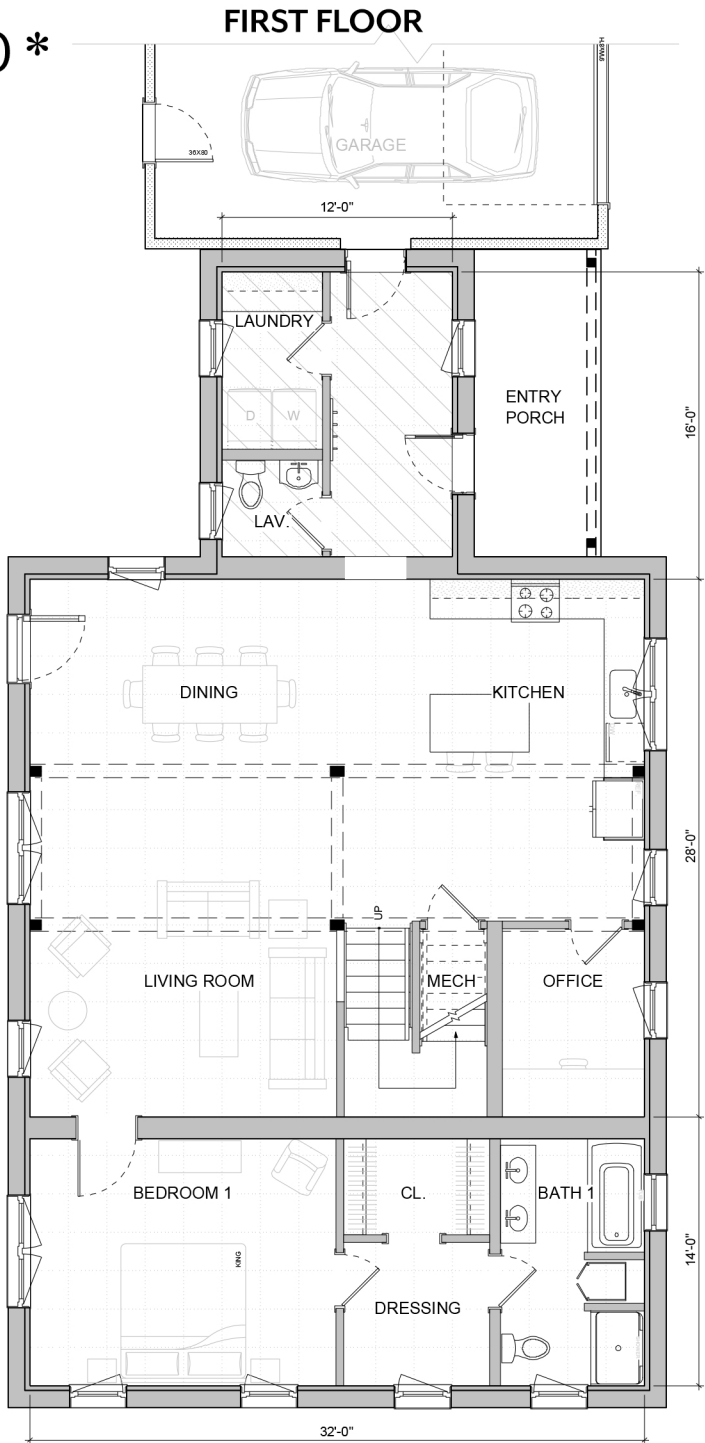
Total SF uses exterior dimensions.

COMPONENTS SHOWN:

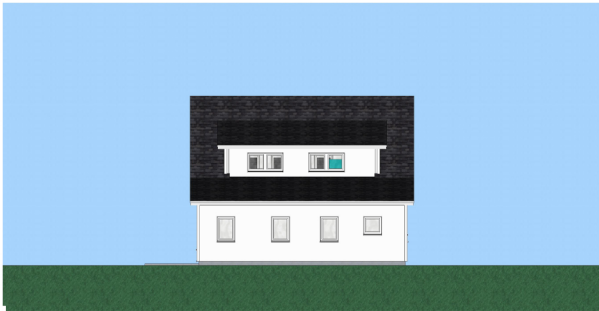
- Dormers
- 14 x 32 Addition
- 12 x 16 Connector
- 24 x 24 Garage
- 6 x 16 Covered Porch



2'-0" GRID



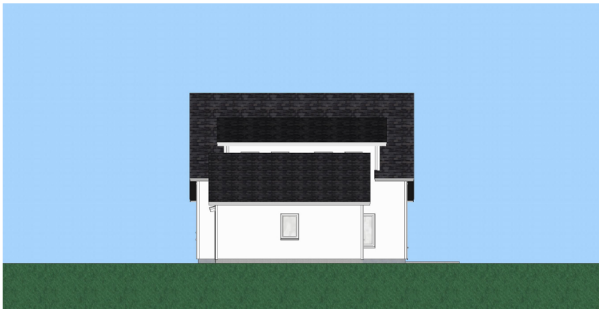
FRONT ELEVATION



SIDE ELEVATION



BACK ELEVATION



SIDE ELEVATION

See [UNITYHOMES.COM >>DESIGNS >>TRADD](https://unityhomes.com/designs/tradd) for options, selections and specifications