

SHELL ESTIMATE: \$215,000 \*

Finished Estimate: \$535,000 \*

*\* Estimates are not site specific. They do not include shipping, sales tax on materials, or any adjustments for the local costs or the trades in your area. Estimates exclude site work and assume a slab-on-grade foundation and standard Unity Home fixtures & finishes.*

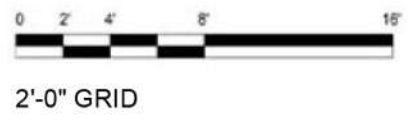
*We are providing these numbers for estimating purposes. Please work with your local builder to confirm final estimate.*

FIRST FLOOR	1,085 SF
TOTAL	1,085 SF
<small>Total SF uses exterior dimensions.</small>	

COMPONENTS SHOWN:  
10 x 12 Deck

 AREA OF SLOPED CEILING

 AREA OF DROPPED CEILING



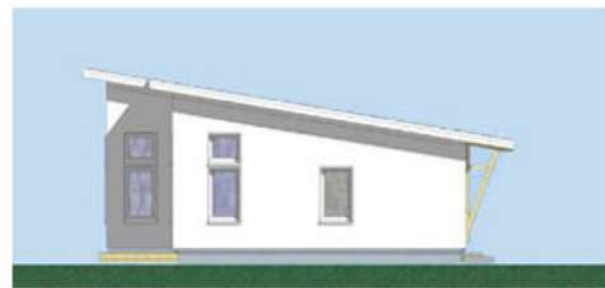
FRONT ELEVATION



SIDE ELEVATION



BACK ELEVATION



SIDE ELEVATION

SHELL ESTIMATE: \$315,000 \*

Finished Estimate: \$760,000 \*

*\*Estimates are not site specific. They do not include shipping, sales tax on materials, or any adjustments for the local costs or the trades in your area. Estimates exclude site work and assume a slab-on-grade foundation and standard Unity Home fixtures & finishes.*

*We are providing these numbers for estimating purposes. Please work with your local builder to confirm final estimate.*

FIRST FLOOR	1,570 SF
TOTAL	1,570 SF
<i>Total SF uses exterior dimensions.</i>	

COMPONENTS SHOWN:

- 12 x 24 Addition
- 12 x 12 Connector
- 24 x 24 Garage
- 5 x 12 Covered Porch
- 10 x 12 Deck

 AREA OF SLOPED CEILING

 AREA OF 8 FT HIGH CEILING



See [UNITYHOMES.COM](https://unityhomes.com) >>DESIGNS >>ZUM for options, selections and specifications



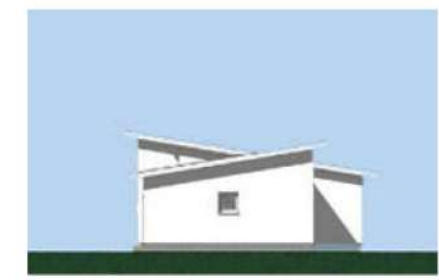
FRONT ELEVATION



SIDE ELEVATION



BACK ELEVATION



SIDE ELEVATION



SHELL ESTIMATE: \$300,000 \*

Finished Estimate: \$745,000 \*

*\* Estimates are not site specific. They do not include shipping, sales tax on materials, or any adjustments for the local costs or the trades in your area. Estimates exclude site work and assume a slab-on-grade foundation and standard Unity Home fixtures & finishes.*

*We are providing these numbers for estimating purposes. Please work with your local builder to confirm final estimate.*

FIRST FLOOR	1,570 SF
TOTAL	1,570 SF
Total SF uses exterior dimensions.	

COMPONENTS SHOWN:

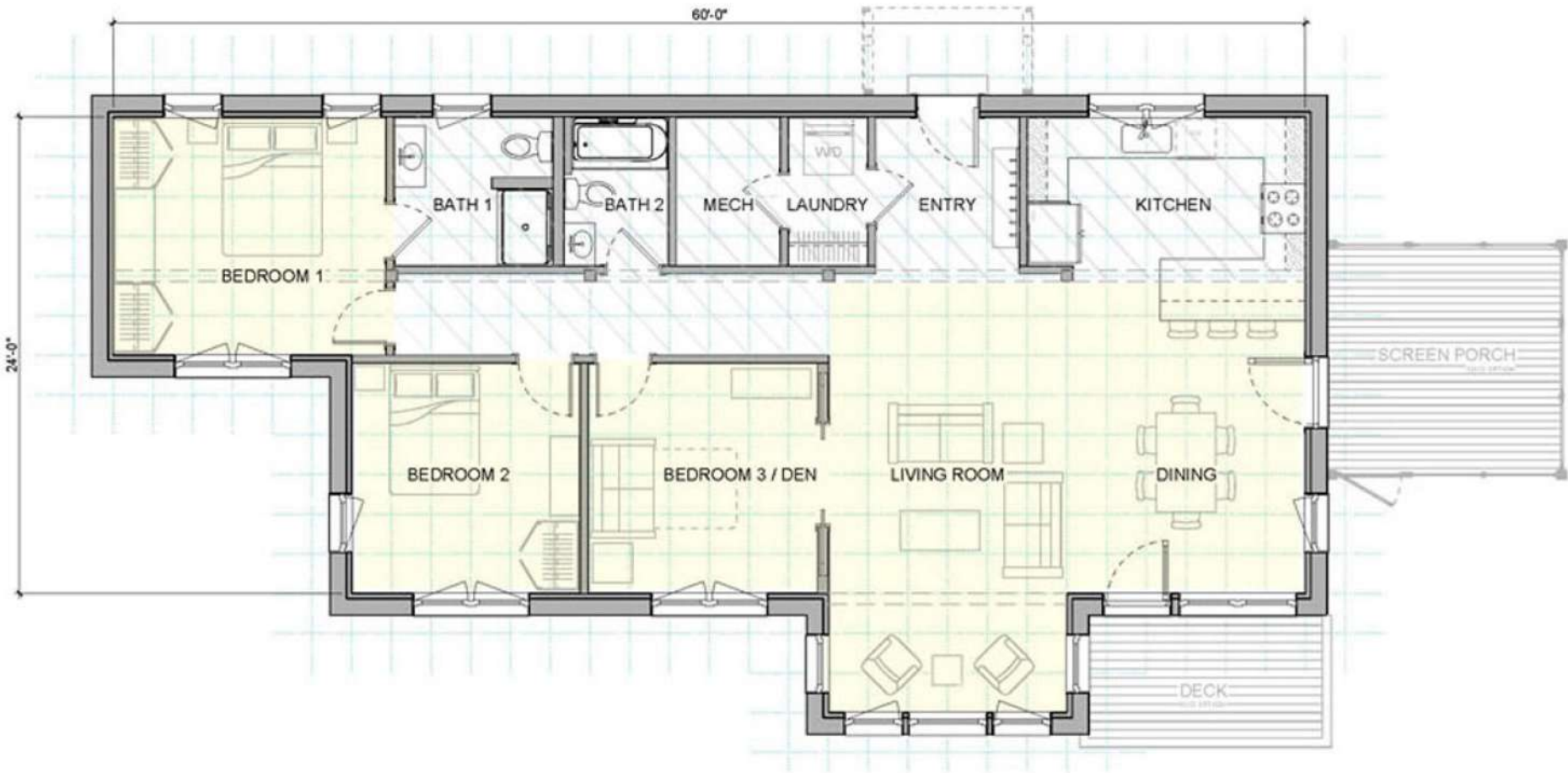
- 12 x 24 Addition
- 12 x 12 Addition
- 5 x 8 Entry Porch
- 12 x 12 Screen Porch
- 10 x 12 Deck

AREA OF SLOPED CEILING

AREA OF 8 FT HIGH CEILING

02'4'8'16'

2'-0" GRID



See [UNITYHOMES.COM >>DESIGNS >>ZUM](https://unityhomes.com/designs/zum) for options, selections and specifications



FRONT ELEVATION



SIDE ELEVATION



BACK ELEVATION



SIDE ELEVATION

SHELL ESTIMATE: \$300,000 \*

**Finished Estimate: \$750,000 \***

\*Estimates are not site specific. They do not include shipping, sales tax on materials, or any adjustments for the local costs or the trades in your area. Estimates exclude site work and assume a slab-on-grade foundation and standard Unity Home fixtures & finishes.

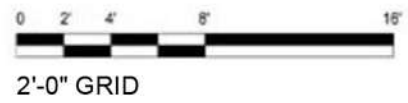
We are providing these numbers for estimating purposes. Please work with your local builder to confirm final estimate.

FIRST FLOOR	1,618 SF
TOTAL	1,618 SF
<small>Total SF uses exterior dimensions.</small>	

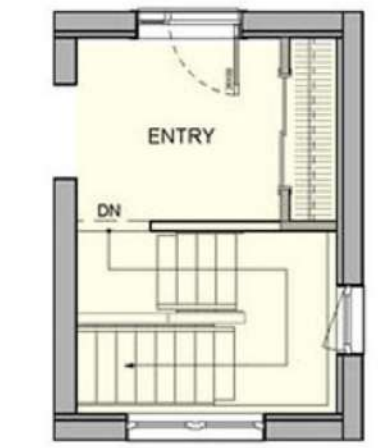
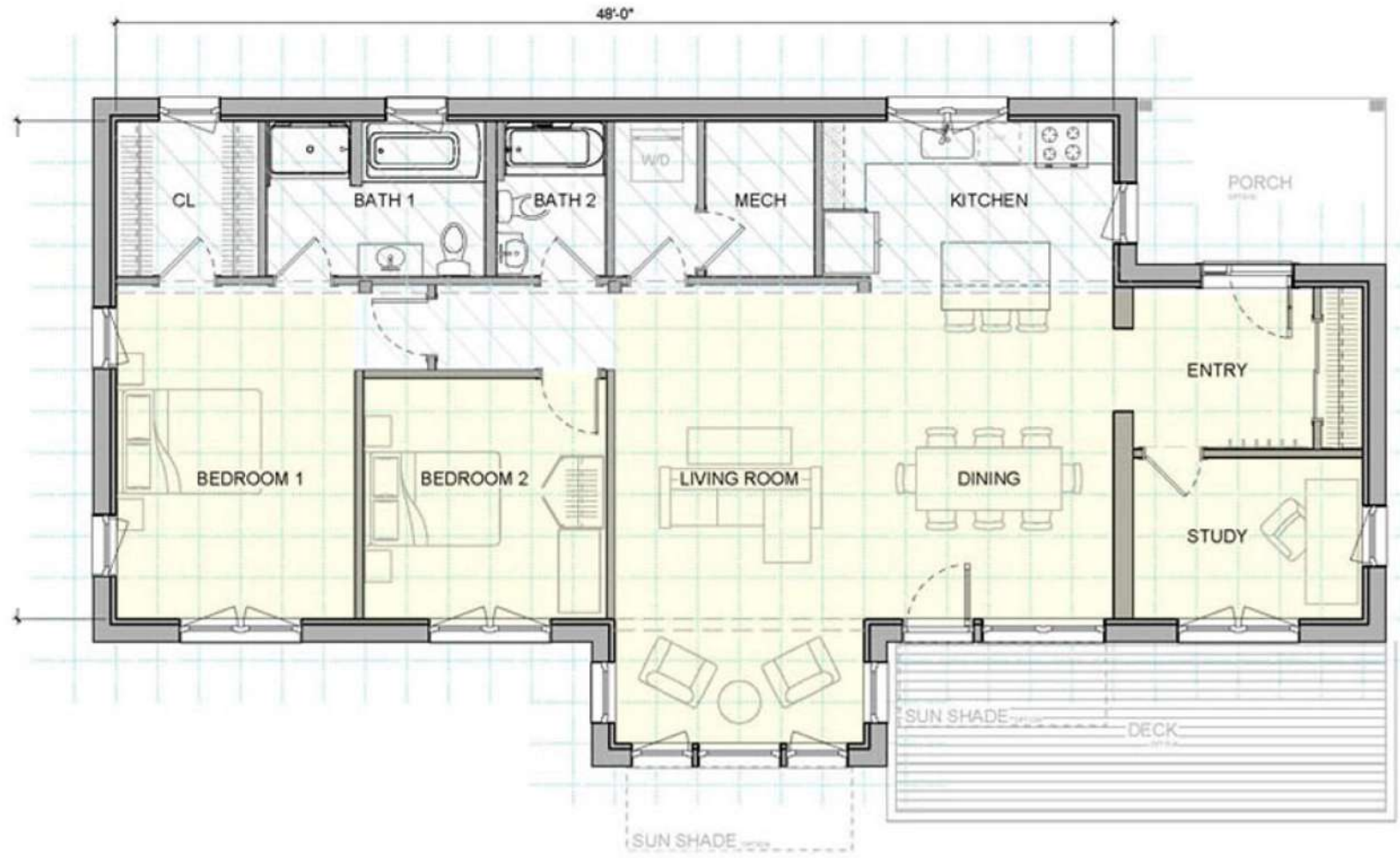
- COMPONENTS SHOWN:**
- 12 x 24 Addition
  - 12 x 16 Connector
  - 6 x 12 Covered Porch
  - 10 x 24 Deck

 AREA OF SLOPED CEILING

 AREA OF 8 FT HIGH CEILING



See [UNITYHOMES.COM](https://unityhomes.com) >>DESIGNS >>ZUM for options, selections and specifications



BASEMENT STAIR OPTION



FRONT ELEVATION



SIDE ELEVATION



BACK ELEVATION



SIDE ELEVATION



SHELL ESTIMATE: \$340,000 \*


Finished Estimate: \$825,000 \*


\* Estimates are not site specific. They do not include shipping, sales tax on materials, or any adjustments for the local costs or the trades in your area. Estimates exclude site work and assume a slab-on-grade foundation and standard Unity Home fixtures & finishes.


We are providing these numbers for estimating purposes. Please work with your local builder to confirm final estimate.

FIRST FLOOR	1,714 SF
TOTAL	1,714 SF
<small>Total SF uses exterior dimensions.</small>	

- COMPONENTS SHOWN:
- 12 x 24 Addition
  - 12 x 24 Addition
  - 24 x 24 Garage
  - 10 x 12 Deck

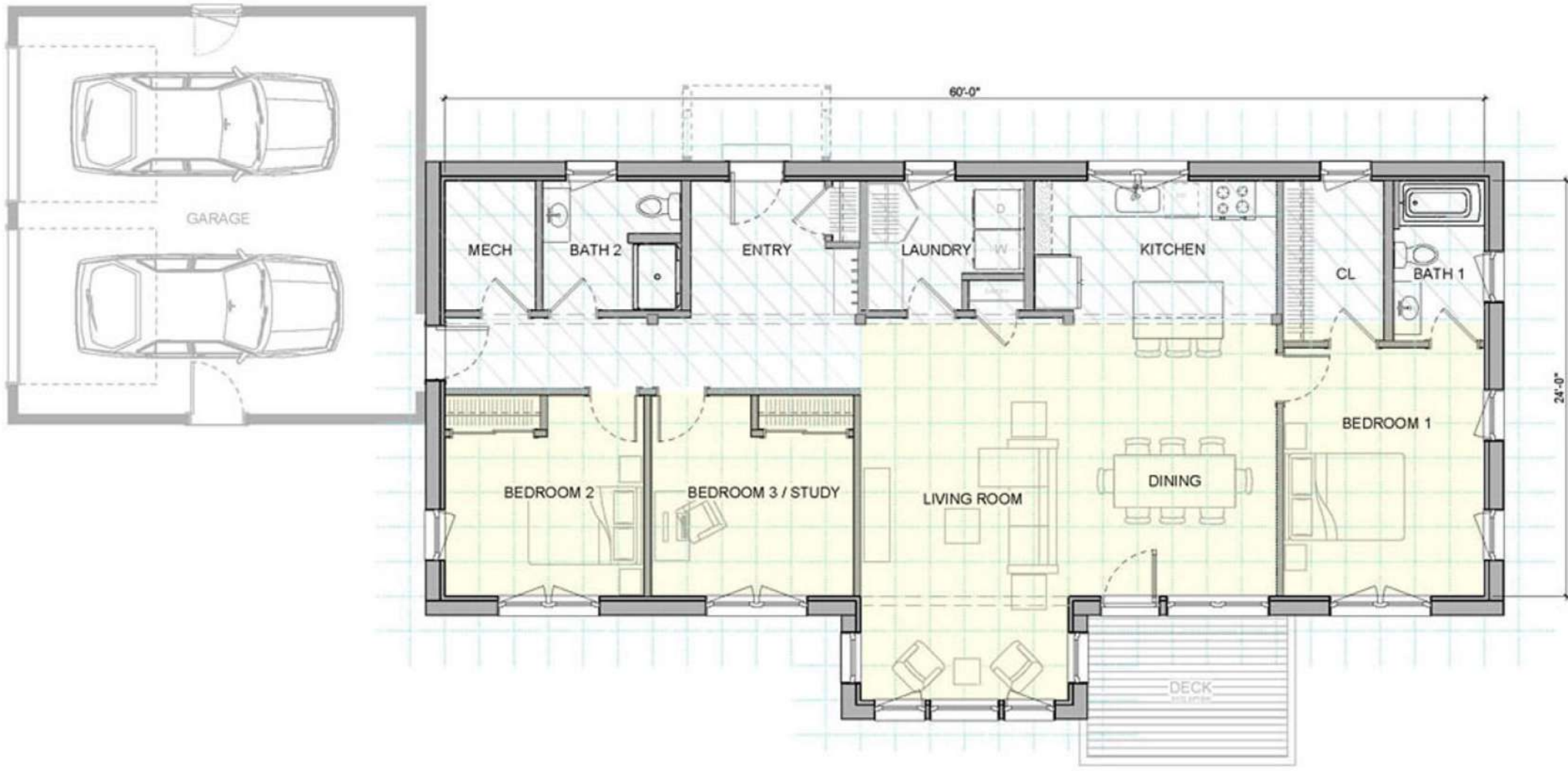
 AREA OF SLOPED CEILING

 AREA OF 8 FT HIGH CEILING



2'-0" GRID

See [UNITYHOMES.COM >>DESIGNS >>ZUM](https://unityhomes.com/designs/zum) for options, selections and specifications



FRONT ELEVATION



SIDE ELEVATION



BACK ELEVATION



SIDE ELEVATION

# ZUM 354

SHELL ESTIMATE: \$380,000 \*

Finished Estimate: \$910,000 \*

*\*Estimates are not site specific. They do not include shipping, sales tax on materials, or any adjustments for the local costs or the trades in your area. Estimates exclude site work and assume a slab-on-grade foundation and standard Unity Home fixtures & finishes.*

*We are providing these numbers for estimating purposes. Please work with your local builder to confirm final estimate.*

FIRST FLOOR	1,967 SF
TOTAL	1,967 SF

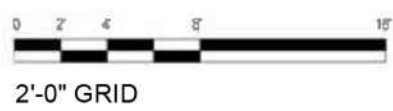
Total SF uses exterior dimensions.

COMPONENTS SHOWN:

- 12 x 24 Addition
- 12 x 12 Addition
- 12 x 12 Addition
- 12 x 12 Connector
- 24 x 24 Garage
- 5 x 8 Entry Porch
- 8 x 12 Deck
- 8 x 12 Deck

 AREA OF SLOPED CEILING

 AREA OF DROPPED CEILING



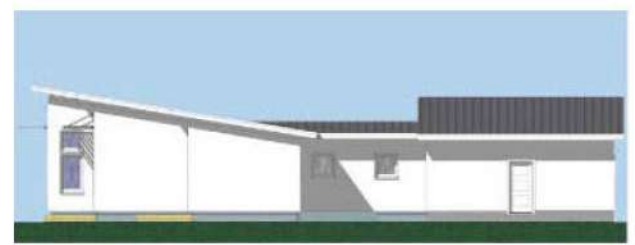
FRONT ELEVATION



SIDE ELEVATION



BACK ELEVATION



SIDE ELEVATION

See UNITYHOMES.COM >>DESIGNS >>ZUM for options, selections and specifications



# ZUM STREAMLINED E3

SHELL ESTIMATE: \$270,000 \*

Finished Estimate: \$670,000 \*

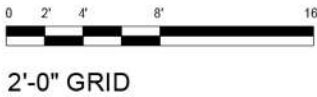
*\*Estimates are not site specific. They do not include shipping, sales tax on materials, or any adjustments for the local costs or the trades in your area. Estimates exclude site work and assume a slab-on-grade foundation and standard Unity Home fixtures & finishes.*

*We are providing these numbers for estimating purposes. Please work with your local builder to confirm final estimate.*

FIRST FLOOR	1,407 SF
TOTAL	1,407 SF
<i>Total SF uses exterior dimensions.</i>	

COMPONENTS SHOWN:

- 12 x 24 Addiiton
- 8 x 12 Covered Porch
- 12 x 12 Screen Porch
- 10 x 12 Deck



See [UNITYHOMES.COM >>DESIGNS >>ZUM](https://unityhomes.com/designs/zum) for options, selections and specifications



FRONT ELEVATION



SIDE ELEVATION



BACK ELEVATION



SIDE ELEVATION

# ZUM STREAMLINED G11

SHELL ESTIMATE: \$350,000 \*

Finished Estimate: \$845,000 \*

Estimates are not site specific. They do not include shipping, sales tax on materials, or any adjustments for the local costs or the trades in your area. Estimates exclude site work and assume a slab-on-grade foundation and standard Unity Home fixtures & finishes.

We are providing these numbers for estimating purposes. Please work with your local builder to confirm final estimate.

FIRST FLOOR	1,855 SF
TOTAL	1,855 SF
Total SF uses exterior dimensions.	

COMPONENTS SHOWN:

- 12 x 24 Addition
- 12 x 16 Addition
- 12 x 16 Connector
- 24 x 24 Garage
- 6 x 16 Covered Porch



2'-0" GRID

See [UNITYHOMES.COM >>DESIGNS >>ZUM](https://unityhomes.com/designs/zum) for options, selections and specifications



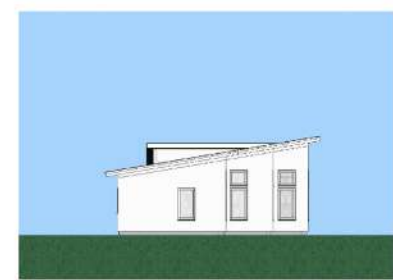
FRONT ELEVATION



SIDE ELEVATION



BACK ELEVATION



SIDE ELEVATION



# ZUM STREAMLINED E7

SHELL ESTIMATE: \$270,000 \*

Finished Estimate: \$675,000 \*

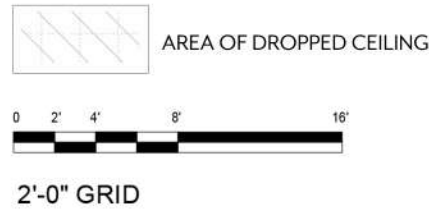
.\* Estimates are not site specific. They do not include shipping, sales tax on materials, or any adjustments for the local costs or the trades in your area. Estimates exclude site work and assume a slab-on-grade foundation and standard Unity Home fixtures & finishes.

We are providing these numbers for estimating purposes. Please work with your local builder to confirm final estimate.

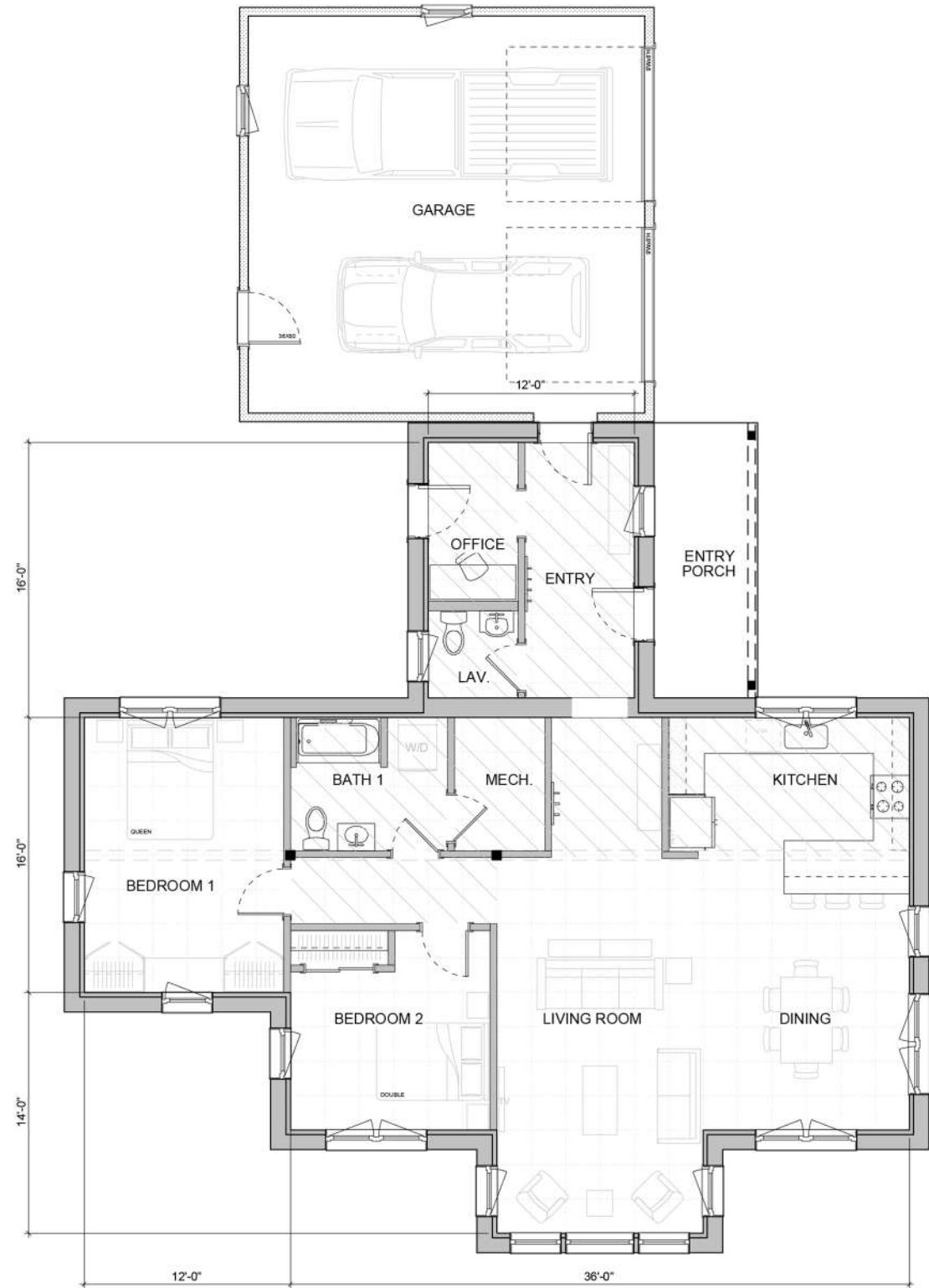
FIRST FLOOR	1,540 SF
TOTAL	1,540 SF
<small>Total SF uses exterior dimensions.</small>	

COMPONENTS SHOWN:

- 12 x 16 Addition
- 12 x 16 Connector
- 24 x 24 GARage
- 6 x 16 Covered Porch



See [UNITYHOMES.COM >>DESIGNS >>ZUM](https://unityhomes.com/designs/zum) for options, selections and specifications



FRONT ELEVATION



SIDE ELEVATION



BACK ELEVATION



SIDE ELEVATION