

XYLA ONE

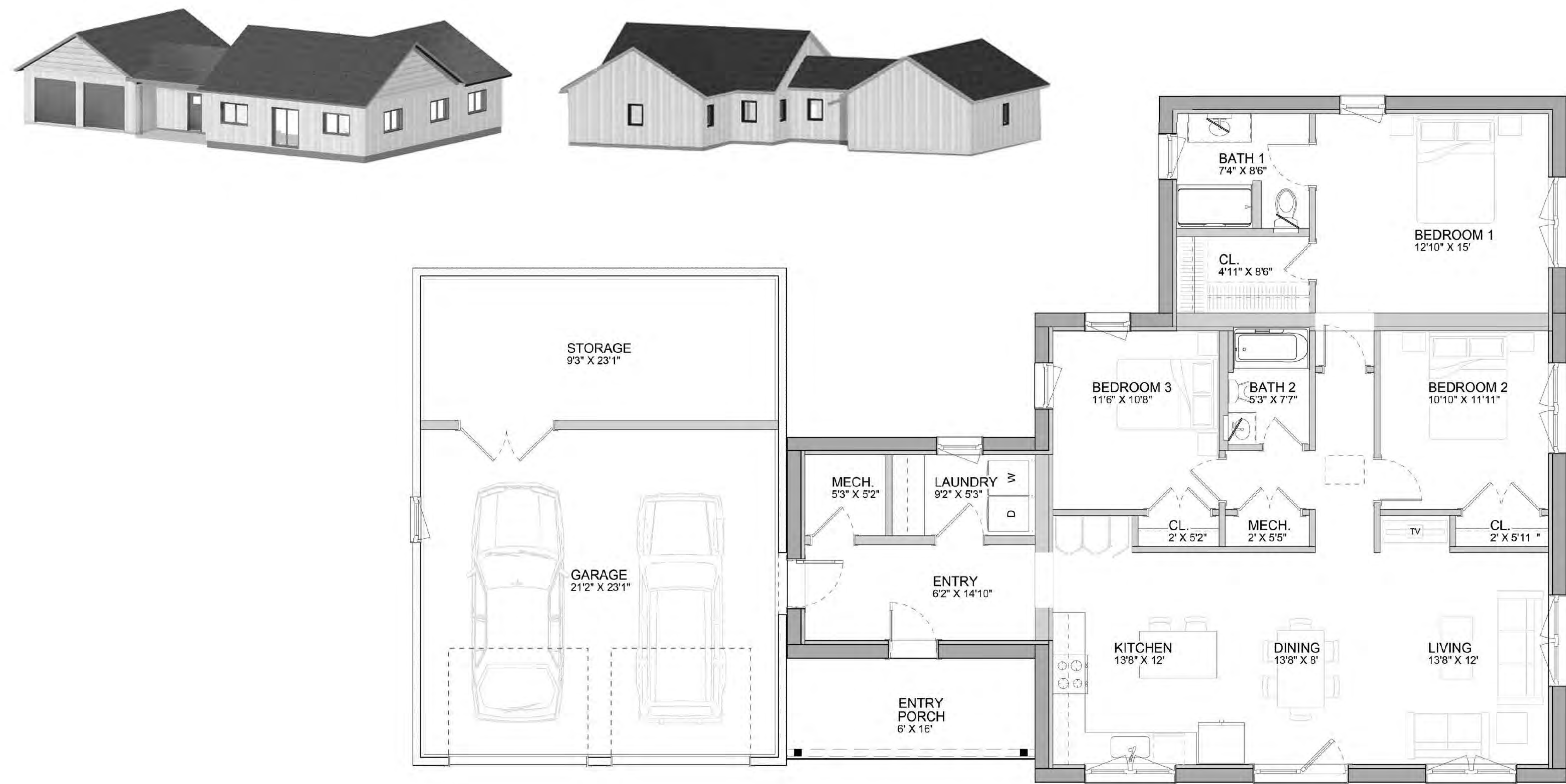
EXPRESS



UNITY'S EXPRESS PLANS offer a faster, more affordable way to your new high-performance home. We've taken our favorite designs and distilled them into a collection of pre-engineered plans that are ready-to-build, as shown. Because the Express Plan pathway bypasses any design customization, it can reduce Unity's lead time by 3 to 4 months, and results in up to 15% savings on the shell package cost.

Please contact Unity's sales advisors to find out whether Express Plans are the right solution for your project!

TOTAL LIVING SPACE 1,635 SF
ENTRY PORCH 102 SF
2-CAR GARAGE 774 SF



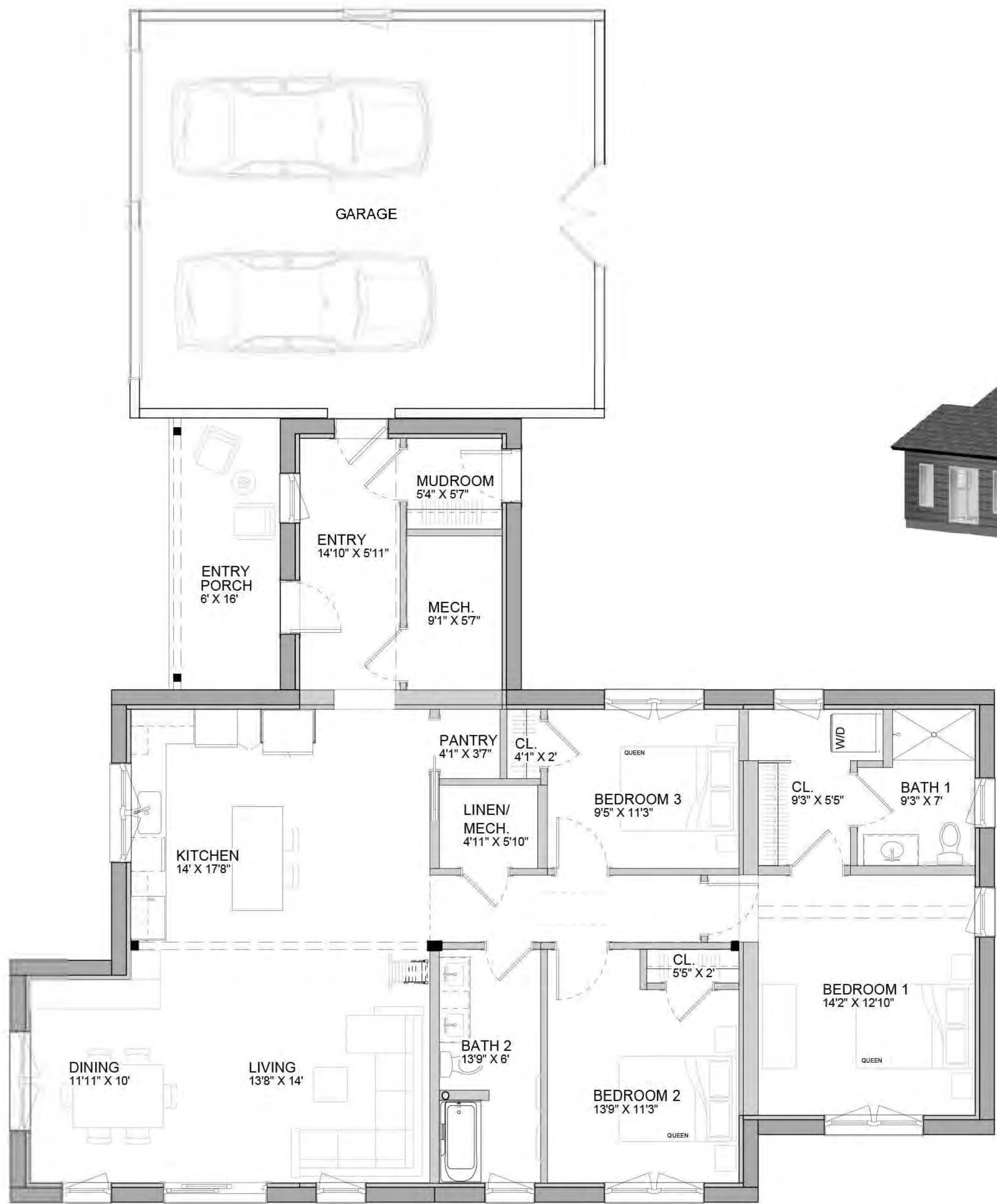
XYLA TWO

EXPRESS

UNITY'S EXPRESS PLANS offer a faster, more affordable way to your new high-performance home. We've taken our favorite designs and distilled them into a collection of pre-engineered plans that are ready-to-build, as shown. Because the Express Plan pathway bypasses any design customization, it can reduce Unity's lead time by 3 to 4 months, and results in up to 15% savings on the shell package cost.

Please contact Unity's sales advisors to find out whether Express Plans are the right solution for your project!

TOTAL LIVING SPACE 1,635 SF
ENTRY PORCH 102 SF
2-CAR GARAGE 774 SF



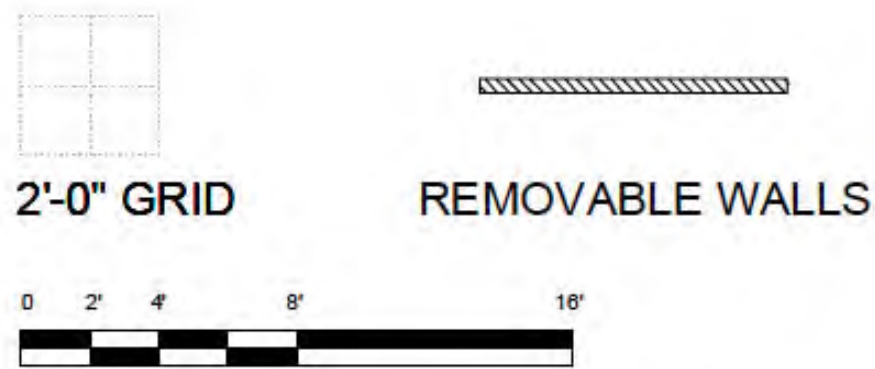
EXAMPLE OF OPTIONS

Unity's Streamlined process utilizes a design system. It is the focus of our “proven process” allowing us to optimize time and costs when working with clients. In the Streamlined process, you have the option to add components to the base platform as well as choose from various interior layouts, to generate a design using standard elements that is also adaptable enough to fit your needs and your site. The advantages of this path include: better value, shorter time frame, simplified decision-making, and greater predictability of cost, schedule and design.

Once you've gathered basic information about your site, your budget and your project goals, you'll be ready to embark with us on the process of configuring your home in a few simple steps. Your sales advisor will guide you through these steps and show you the appropriate starting plans.

- Pick Your Platform
- Understand Your Site
- Choose Your Components
- Configure Your Home

To the right is an example of a constellation, with choices and options for a XYLA streamlined plan. There are several starting plans that act as the base for your further options of orientation and interior layout. Your sales advisor will guide you and provide streamlined plans that may work for you. You'll use a plan like this to layout your home with the sales advisor and prepare for the PSA contract. Under the PSA contract the Unity team will confirm your choices and site the home before providing confirmation of the final layout and pricing.



FIRST FLOOR: 1,635 SF

OPTIONS SHOWN:

- ENTRY PORCH
- 12X12 SCREEN PORCH
- 12X16 CONNECTOR
- 24X24 2 CAR GARAGE
- 14X24 BEDROOM SUITE
- OPTIONAL 6X12 BUMP

① KITCHEN OPTION:

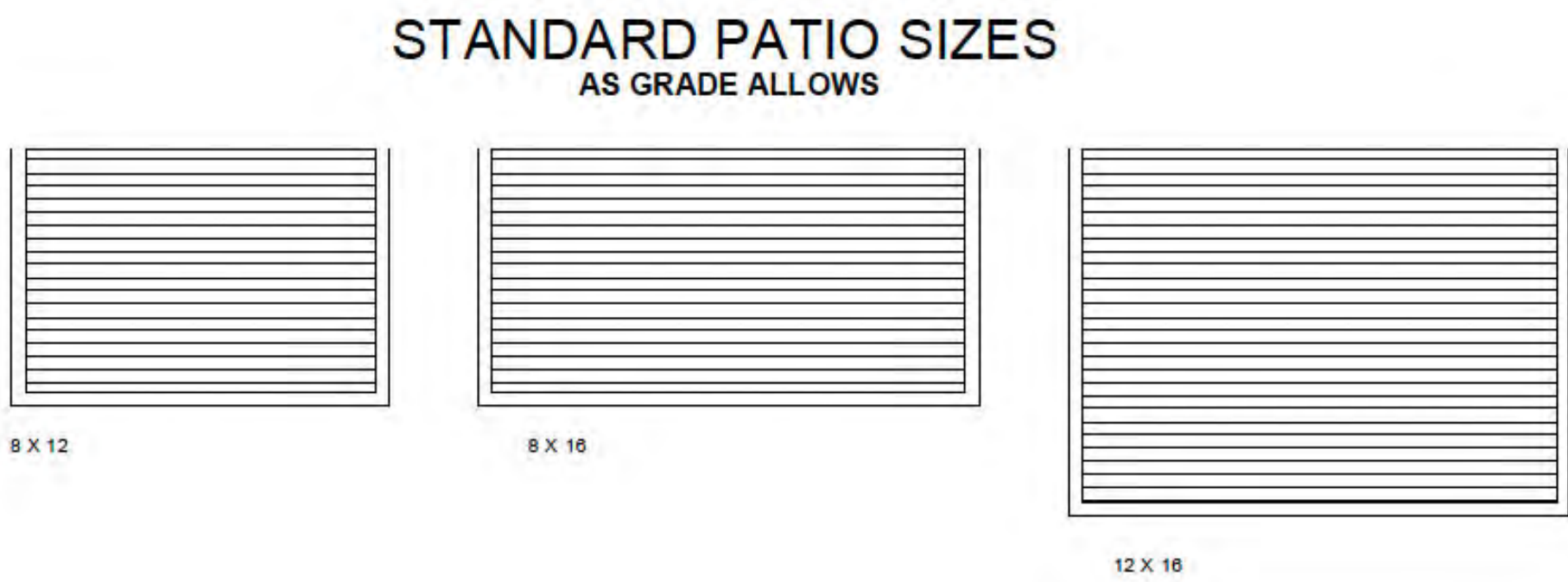
② CONNECTOR OPTION:

③ BEDROOM SUITE OPTION:

④ SCREEN PORCH OPTION:

PROGRAM CHECKLIST:

- KITCHEN
- LIVING ROOM
- DINING ROOM
- DESIRED BATHROOMS
- DESIRED BEDROOMS
- LAUNDRY ROOM
- CLOSETS
- MECHANICAL ROOM
- ENTRY PORCH



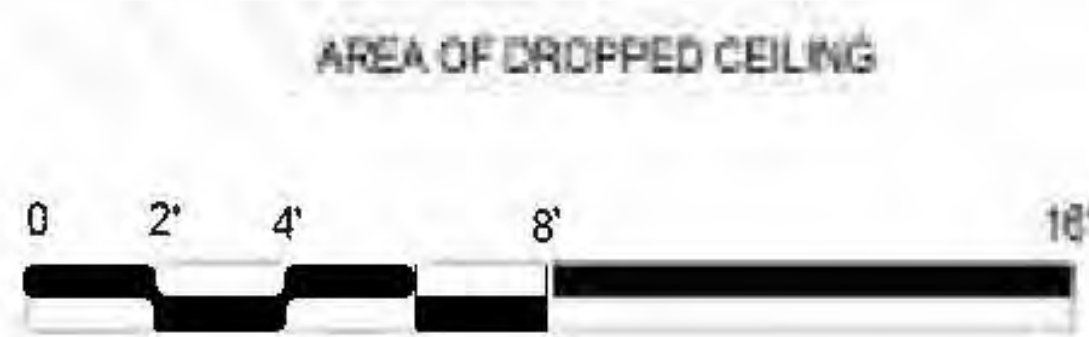
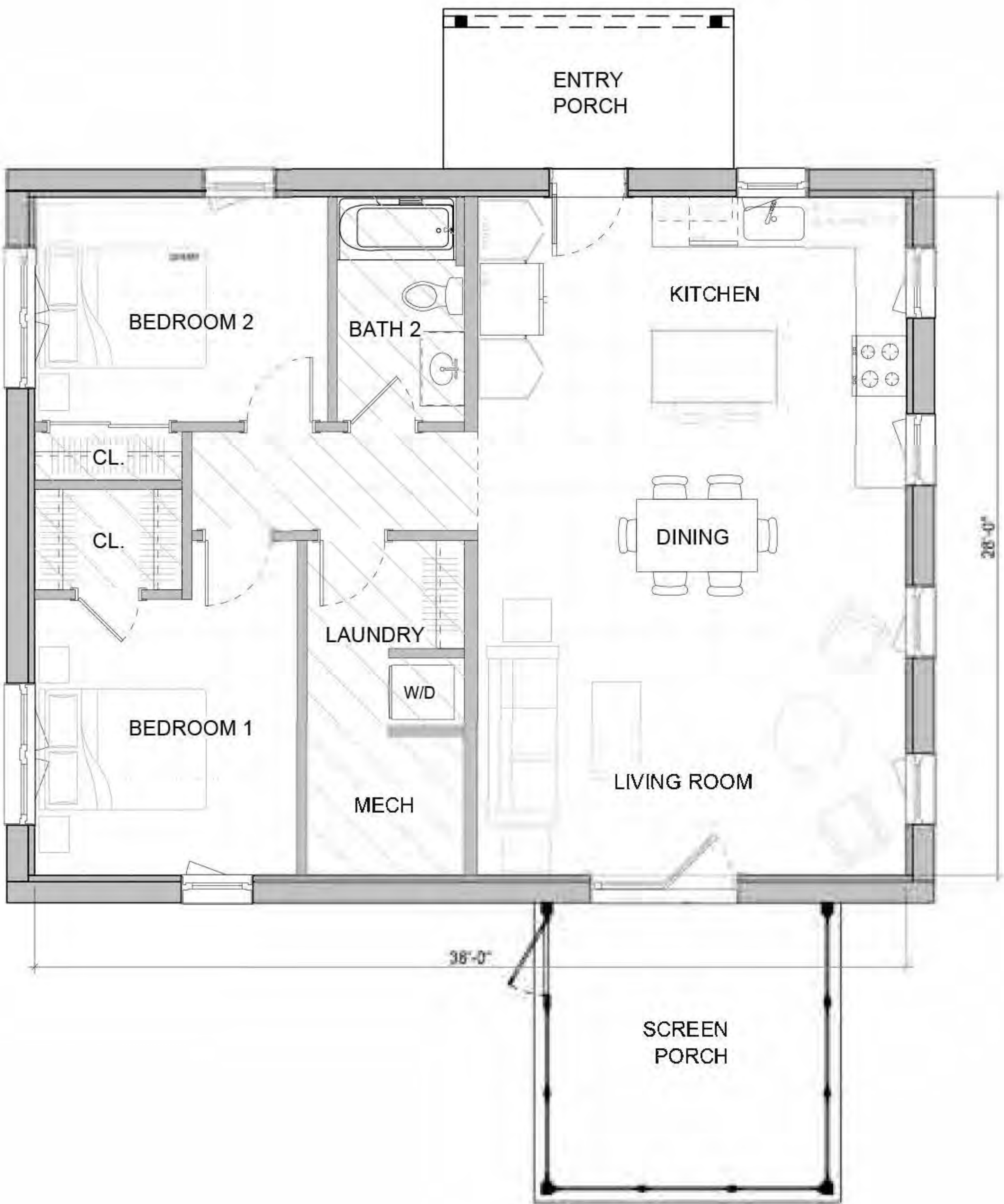
XYLA E1

STREAMLINED

FIRST FLOOR	1,159 SF
TOTAL	1,159 SF

COMPONENTS SHOWN

- 6x16 COVERED PORCH
- 12x12 SCREEN PORCH



unity **STREAMLINED**
homes



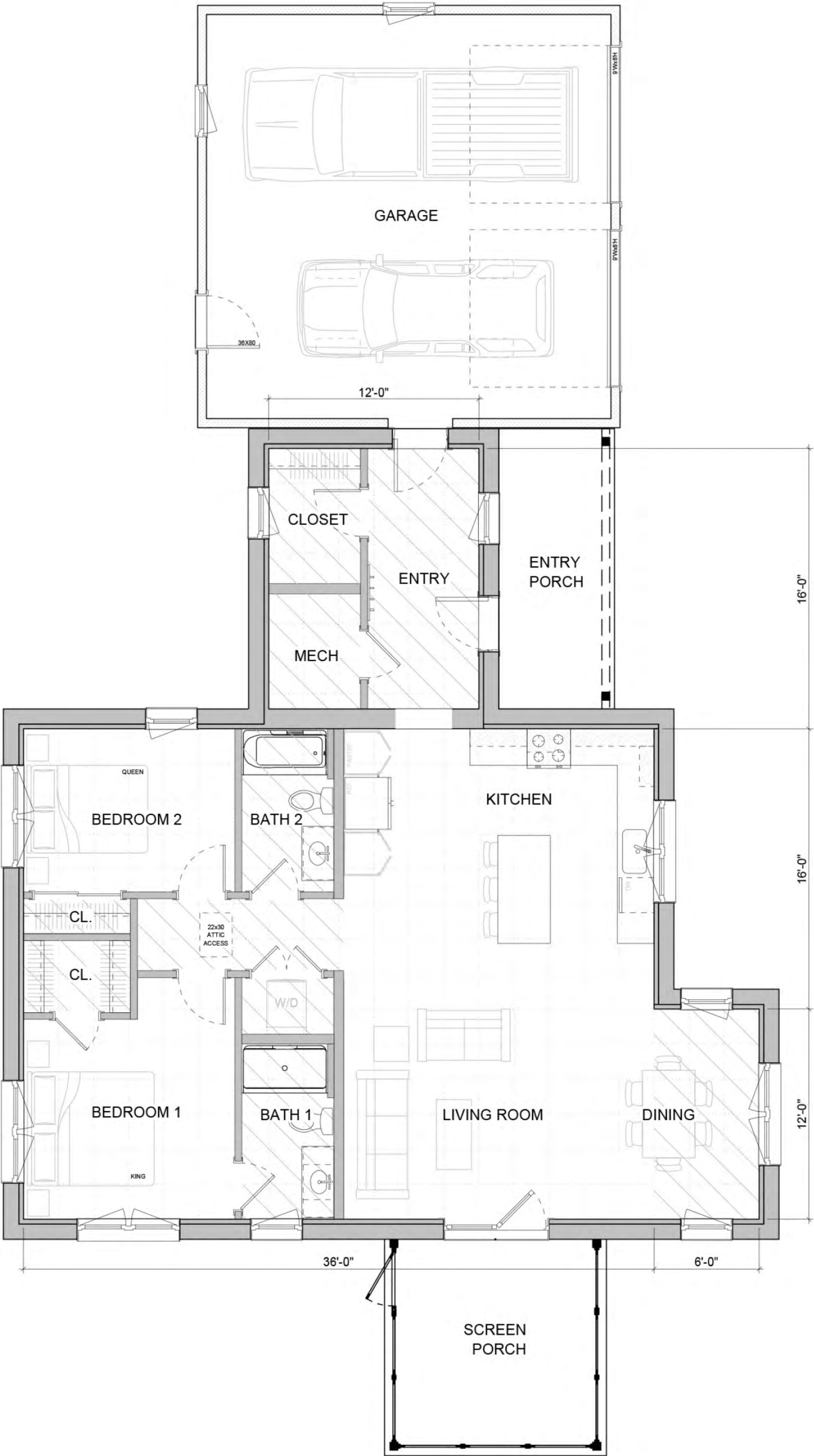
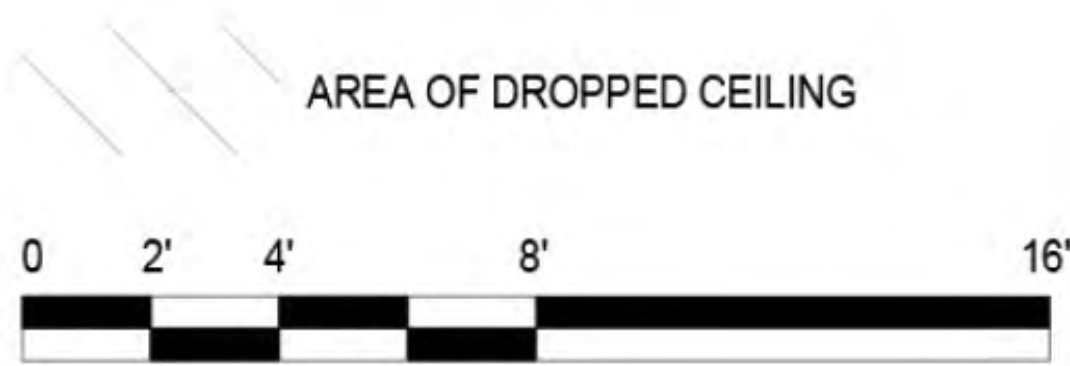
XYLA E3

STREAMLINED

FIRST FLOOR	1, 474 SF
TOTAL	1,474 SF

COMPONENTS SHOWN

- 6x12 ADDITION
- 12x16 CONNECTOR
- 24x24 GARAGE
- 6x16 COVERED PORCH
- 12x12 SCREEN PORCH



unityhomes **STREAMLINED**



unityhomes.com (603) 756-3600

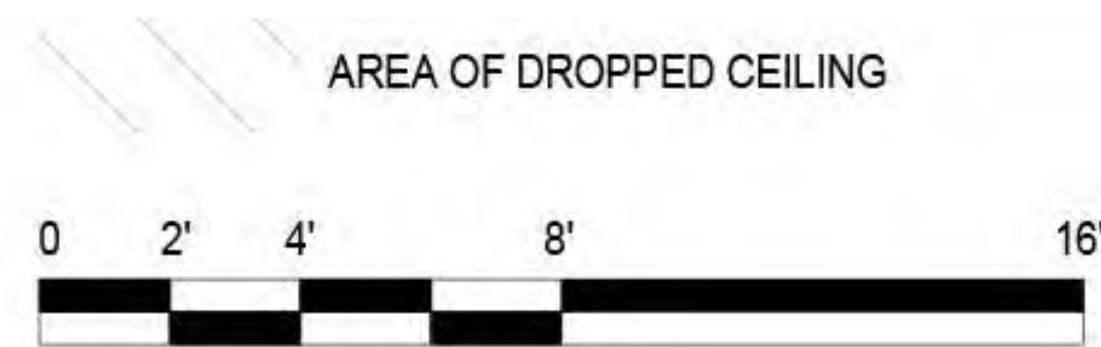
XYLA E5

STREAMLINED

FIRST FLOOR	1,756 SF
TOTAL	1,756 SF

COMPONENTS SHOWN

- 14x24 ADDITION
- 12x16 CONNECTOR
- 24x24 GARAGE
- 6x16 COVERED PORCH



unityhomes **STREAMLINED**



FRONT ELEVATION



SIDE ELEVATION



BACK ELEVATION



SIDE ELEVATION

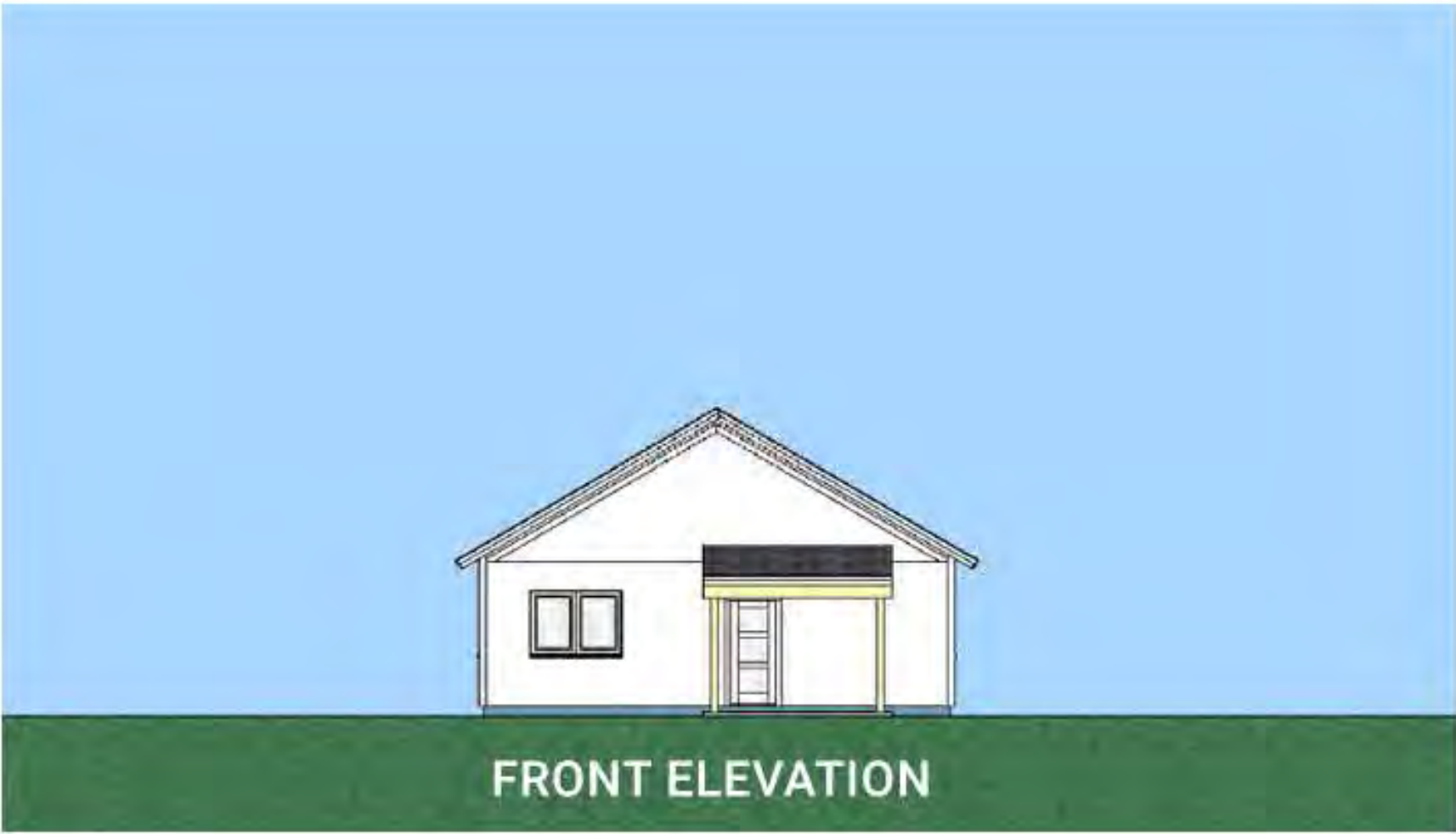
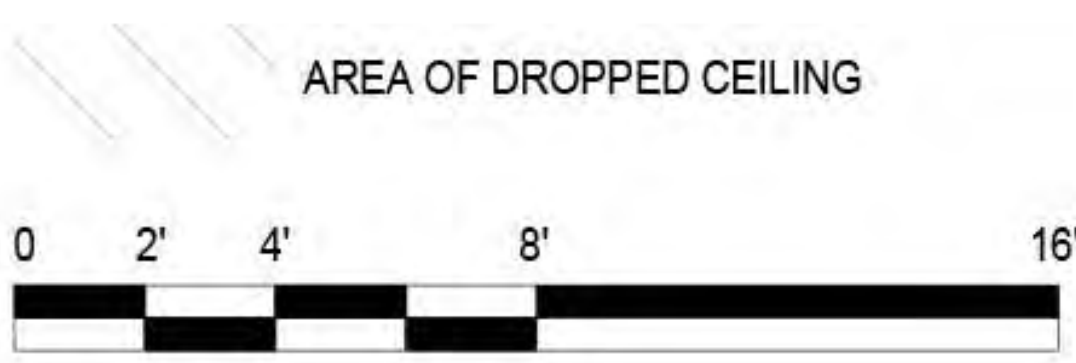
XYLA G1

STREAMLINED

FIRST FLOOR	1,124 SF
TOTAL	1,124 SF

COMPONENTS SHOWN

- 6x12 ADDITION
- 6x12 COVERED PORCH



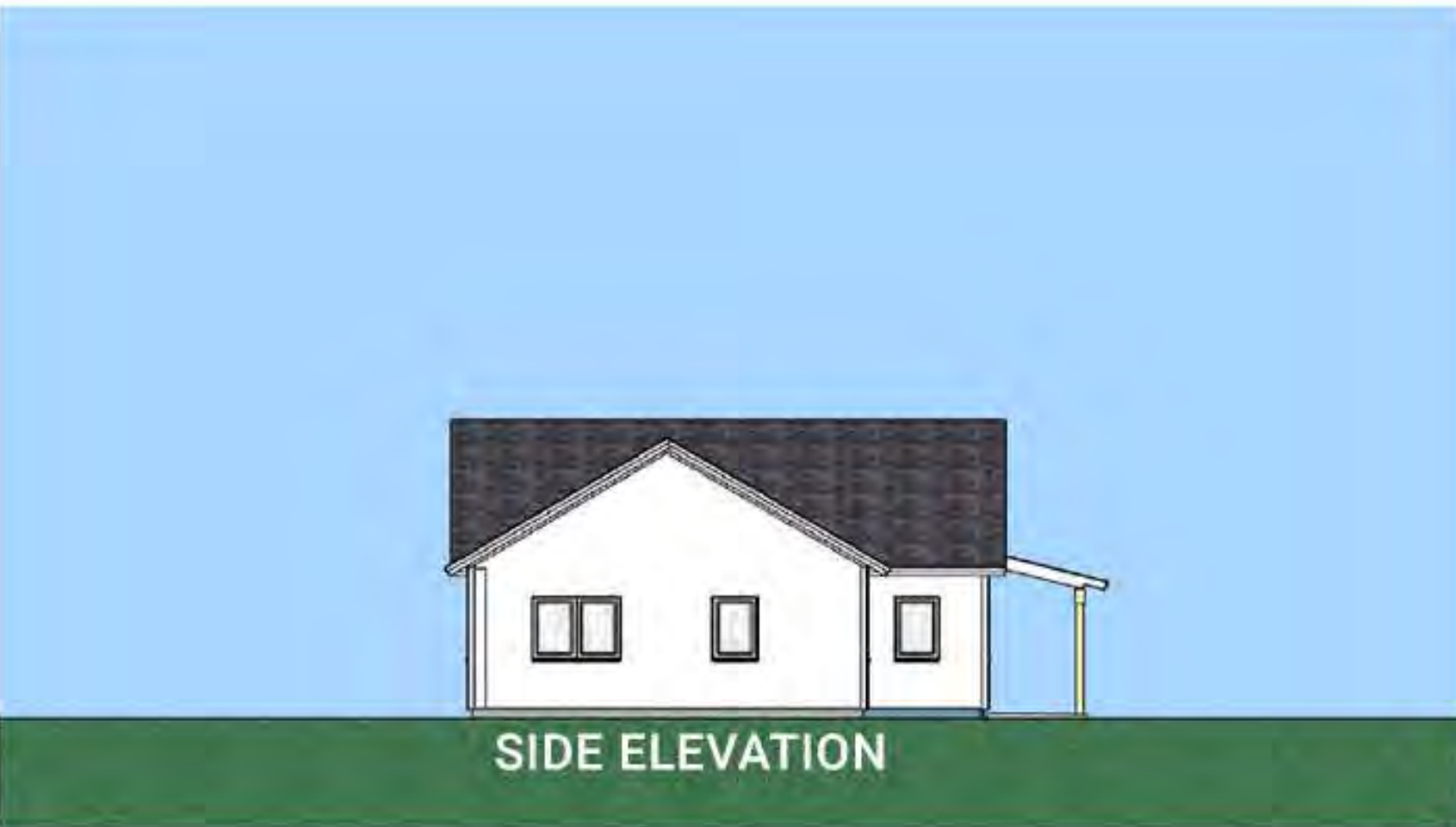
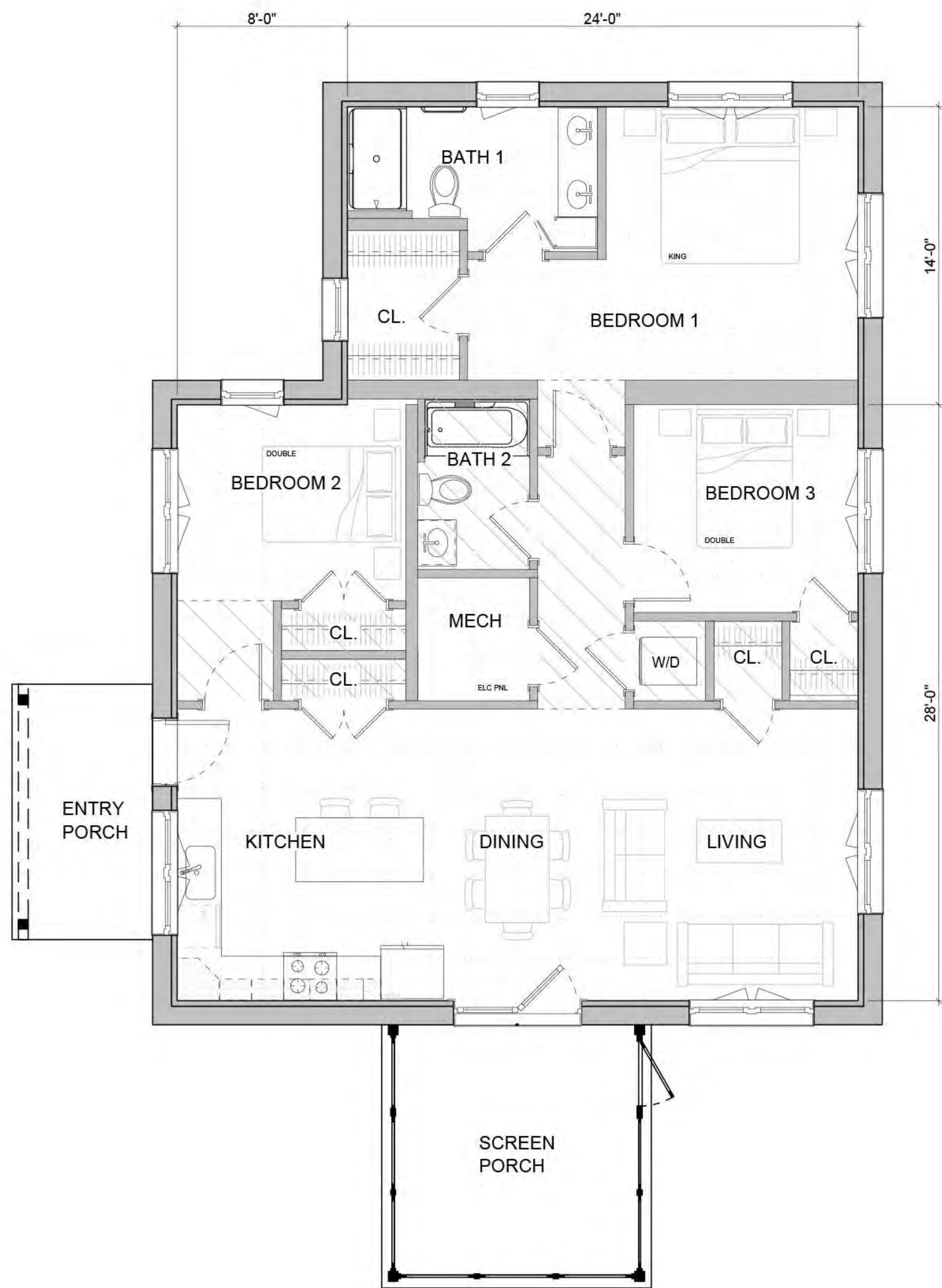
XYLA G2

STREAMLINED

FIRST FLOOR	1,406 SF
TOTAL	1,406 SF

COMPONENTS SHOWN

- 14x24 ADDITION
- 6x12 COVERED PORCH
- 12x12 SCREEN PORCH



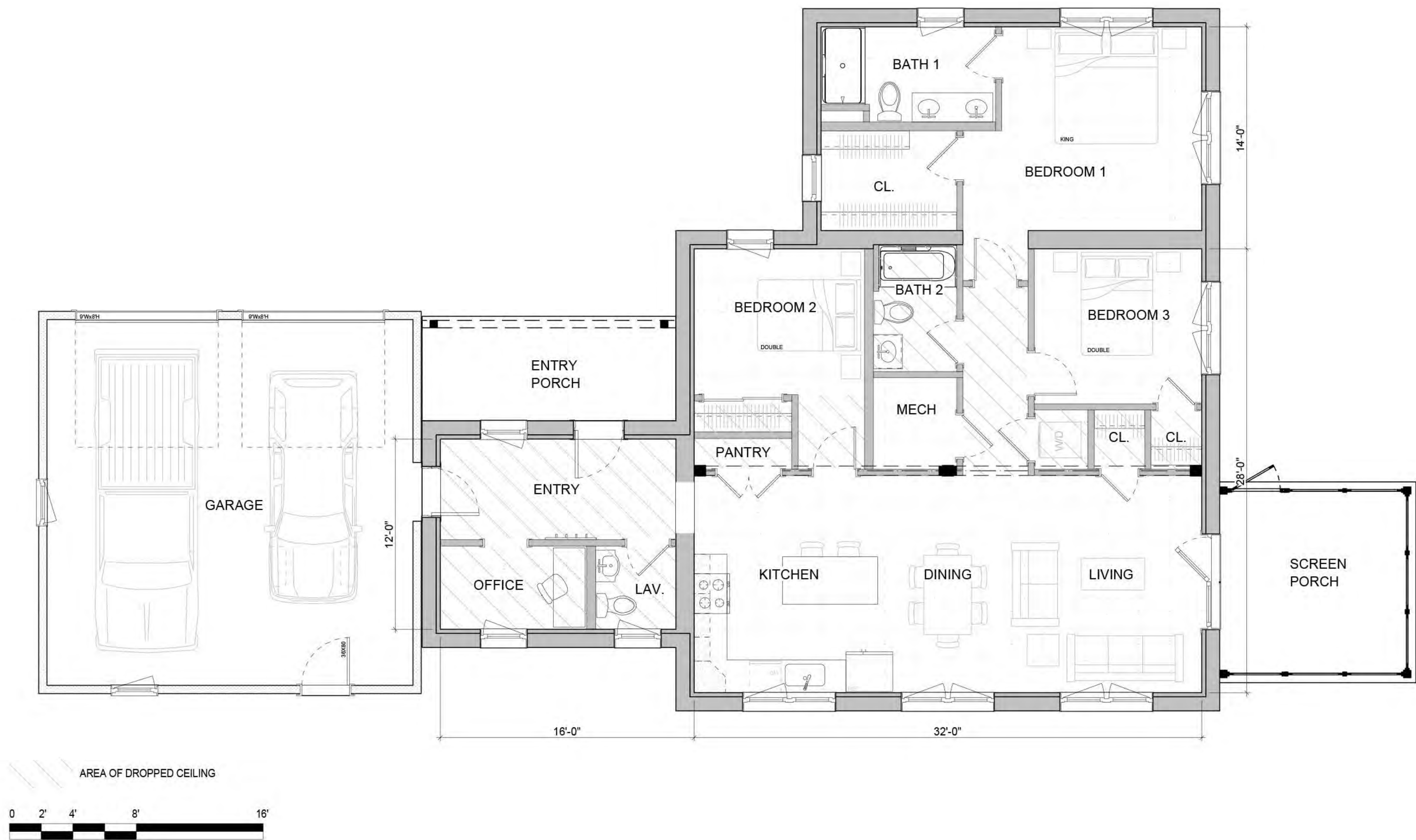
XYLA G5

STREAMLINED

FIRST FLOOR	1,635 SF
TOTAL	1,635 SF

COMPONENTS SHOWN

- 14x24 ADDITION
- 12x16 CONNECTOR
- 24x24 GARAGE
- 6x16 COVERED PORCH
- 12x12 SCREEN PORCH



unity **STREAMLINED**
homes



FRONT ELEVATION



SIDE ELEVATION



BACK ELEVATION



SIDE ELEVATION