

OPEN HOUSE

Work-In-Progress Värm

3 bedroom, 2½ Bath in Norwich, Vermont



LIVING AREA

Total Living Area	2537 SF
2 Car Garage	581 SF
Entry Porch	156 SF
Screen Porch	209 SF
Rear Porch	66 SF

HIGH PERFORMANCE BUILDING SHELL

Wall Insulation	R-32
Roof Insulation	R-60
Foundation Insulation	R-15
Windows	Triple-glazed tilt-turn style
Exterior Timbers	Port Orford cedar
Air Tightness	0.43 ACH50 (shell, post-raising)

MECHANICAL SYSTEMS

Heating / Cooling	Mitsubishi air source heat pump with two zones Minotair Pentacare conditioning ERV Electric resistance baseboard heat
Water Heater	80 Gallon Rheem heat pump
Ventilation	Minotair Pentacare conditioning ERV

EXTERIOR FINISHES

Exterior Timbers	Port Orford cedar
Siding	Fiber cement board and batten
Exterior Trim	Fiber cement
Roofing	Standing seam metal
Decking	Port Orford cedar
Entry Door	Douglas Fir with sidelight

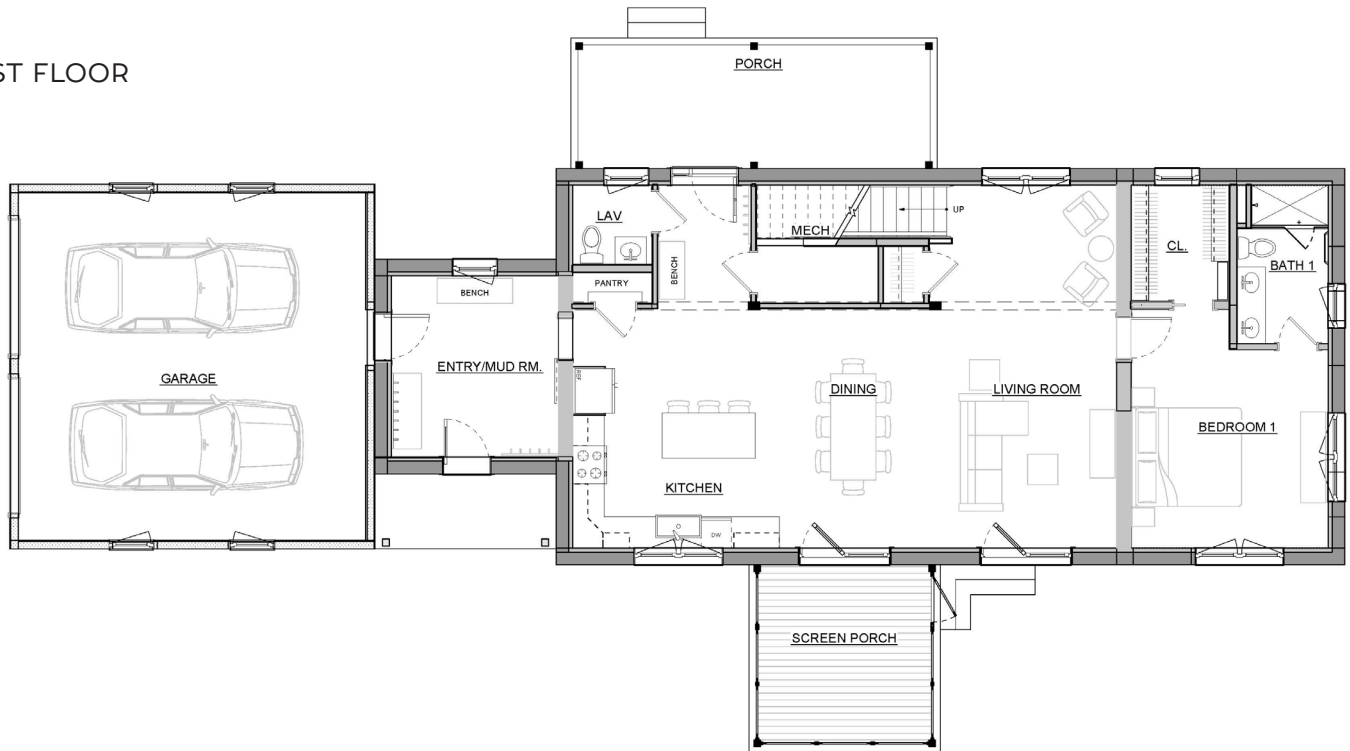
INTERIOR FINISHES

Flooring	1st floor: sealed concrete 2nd floor: Torlys Ever Tile
Wood Trim	Painted pine
Interior Doors	4 panel/painted, by Masonite
Kitchen Counters	Quartz
Bath Counters	Syn-mar composite stone
Kitchen/Bath Cabinets	Starmark
Kitchen Island	Butcher block

FIXTURES

Kitchen Sink	Kohler Whitehaven
Plumbing Fixtures	Kohler and Symmons
Lighting Fixtures	LEDs by Kichler and others

FIRST FLOOR



SECOND FLOOR

